

Receiving

- Conduct site survey to confirm unit can be installed
- Verify a loading dock or forklift is available
- Remove straps, padding, and/or crating material
- Inspect for damage

Highball Tower

- Disassembly Hoshizaki Tower
 - Take valve and top portion of tower off
- Insert disassembled Hoshizaki Tower into New Tower
 - Make sure to slide LED wire from new tower in between Hoshizaki tower and Insulated lines
- Install o ring and large plate to bottom of both towers
 - Using screws from new tower accessories bag
- Mount new tower assembly to bar clamp
- Clamp tower to bar
- If not using bar clamp drill holes in bar top

DSU Chiller (inside)

- Fill DSU/Chiller with a mixture of 2.6 gallons of distilled water and 2 grams of baking soda
- Assemble 1/8th stems and 1/4 nuts with double sided washers to both the spirit and water outlets
- Using parts from DSU accessories bag
 - Assemble 1/4 stem and 1/4 nut with double sided washer to spirit inlet
- Using parts from DSU accessories bag
 - Connect spirit line to S1 outlet fitting
- Using clamp from DSU accessories bag
- Connect carbonated line to CW1 outlet fitting
- Connect both recirculating lines to recirculating fittings

Finish installing accessories from Lancer

- Mount water filter to side of DSU or back wall of bar
- Mount spirit pump to side of DSU or back wall of bar
- Mount regulator to back wall of bar
 - Install CO2 john guest fitting to regulator from Lancer accessories bag
- Install 1/2" fittings to underneath DSU with flat washers to both drain on left side and water inlet on right side
 - Using parts from Lancer accessories bag
- Install 3/8th 90 nut and stem with 3/8 washer to both drain and water inlet
 - Using parts from Lancer accessories bag
- Run 3/8 water line from water source to filter then to bottom right side of DSU
 - 3/8 water line supplied by installer with clamps
- Run 3/8 line from drain fitting on left side of DSU to floor drain
 - 3/8 water line supplied by installer with clamps
- Run Black CO2 tubing from john guest fitting on regulator to underneath right side of DSU next to water fitting
 - Black tubing is from DSU accessories bag
- Run 1/4" tubing from regulator to spirit pump
 - 1/4" tubing supplied by installer with clamps
- Run 1/4" tubing from spirit pump to inside DSU
 - Using line from Hoshizaki accessories
- Assemble 3 bottle reserve and mount to front of DSU or without mounting bracket to back bar wall
 - Use accessories from Lancer
- Run clear tygon tubing from 3 bottle reserve to spirit pump Inlet
 - Tygon tubing supplied by installer with clamps

Testing

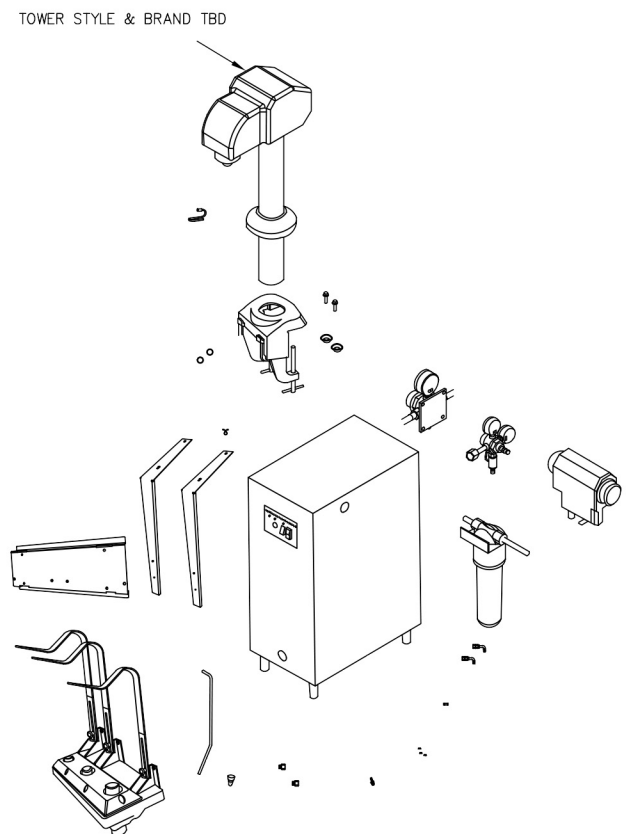
- Pour and test drink quality
 - Ratio should be set at - Toki, Roku, and Haku = 3:1
 - Ratio should be set at - Jim Beam, Hornitos, and El Tesoro (Tequila) = 4:1

Mounting Bracket

- Remove mounting bracket from packaging & check contents
- Remove front two (2) and middle two (2) screws from top of DSU-25SLD-BNA (Highball dispenser undercounter chiller)
- Position flat end of straps over screw holes and insert hex screws
- Position hat bracket on straps and insert (4) machine screws. There will be two (2) per strap
 - Note: The bracket has two (2) potential settings. Placement of the bracket will be determined by the size of the liquor bottles being utilized by dispenser owner. Lowest placement is recommended for 1.75 L bottles and highest placement is recommended for 750 mL bottles

Troubleshooting

- Low carbonation / flat drinks - Out of Co2, pressure set below 110 psi, or no ice on cold plate
- No carbonated water, just Co2 - carbonator timed out or unplugged
- No carbonated water or spirits - Handle not making contact with paddle arms
- Foamy drinks - Check refrigeration / ice bank
- Too strong or too weak - check ratio



For more information visit www.lancerworldwide.com or call 1-800-729-1500

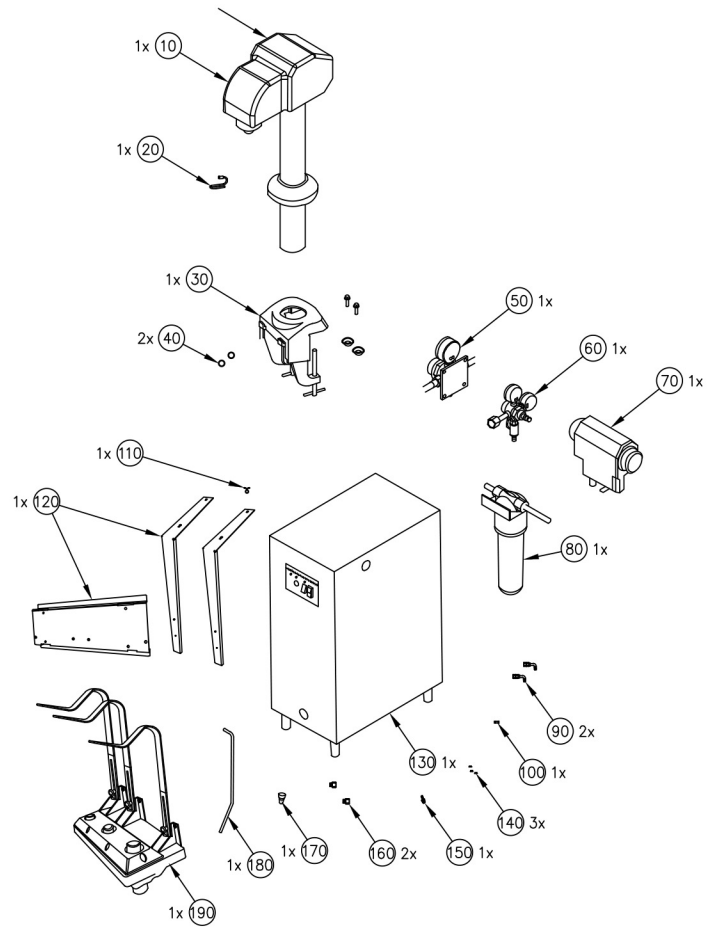
Standard Kit

Chiller Accessories

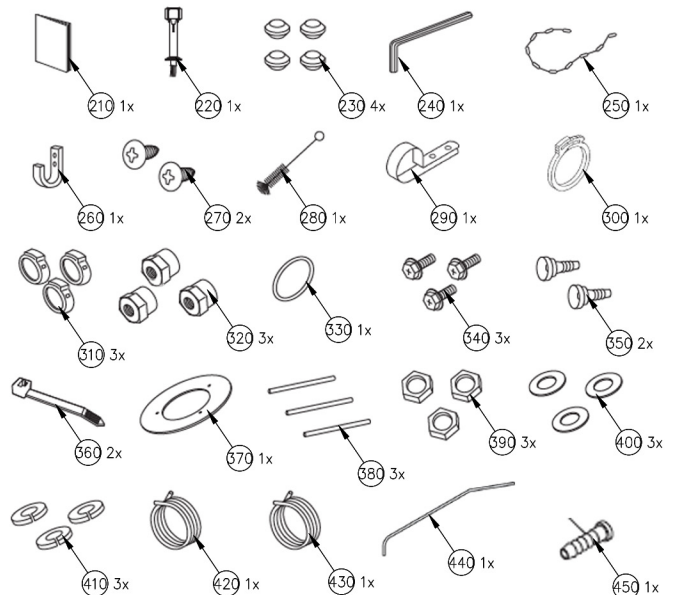
Materials

ITEM NO.	PART NUMBER	DISCRIPTION	QTY.
10	387683P01	COVER (S) PIPE FOR DSU	1
20	484512G01	PIPE (S) LIQUOR FOR DSU	1
30	CLP-1B	HIGHBALL COUNTER ADAPTER - FOR DSU	1
40	430347-02	METAL WASHER FOR DSU	2
50	18-0800	REG. SEC. SODA, WALLMOUNT, 1/4 INLET, 1/4 OUTLET, W/ CHECK	1
60	18-0048/02	REG ASSY, CO2, TANK MNT, HP 1/4 IN	1
70	T5000-140	FLOJET BIB PUMP, 1/4 BARB SS SYRUP OUT, 1/4 BARB GAS IN	1
80	82-5066	WATER FILTER SYSTEM, AETHER	1
90	01-0434/01	ELBOW, SS, 3/8 BARB X 3/8 S NUT	2
100	456772-01	CO2 CONNECTOR FOR DSU	1
110	429385	CLAMP FOR PART #484512G01 FOR DSU	1
120	82-6054	KIT, MOUNT, JIM BEAM	1
130	DSU-25SLD-BNA	HIGHBALL DISPENSER	1
140	05-0017	WASHER, SEAL, FLR, NYLON, 3/8 (5/8)	3
150	01-0244/01	ADAPTER, SS, 1/4 FLR x 1/4 BARB	1
160	P01509-01	INLET NUT - FOR DSU	2
170	450648-01	CAP, BOTTLE	1
180	456710-01	PIPE, LIQUOR	1
190	8000247	RESERVE 3-BOTTLE - FOR SHURFLO	1
200	90-0395	CARTON, 20x18x22	1
210	L1W060101	INSTRUCTION MANUAL	1
220	125712A01	TOWER ASSEMBLY	1
230	456585-01	GASKET	4
240	426453-01	HEX SPANNER	1
250	TS5293561	CHAIN	1
260	T426A23-1	HOOK (CHAIN)	1
270	FT10420M0	TRUSS HEAD SCREW (HOOK, 4 X 20)	2
280	TL2865551	BRUSH	1
290	418814-08	CLAMP	1
300	435947-15	HOSE CLAMP (S)	1
310	450890-01	HOSE CLAMP	3
320	423130-01	SWIVEL NUT	3
330	7617-A006	O-RING	1
340	FBK0616S0	CROSS HEAD HEX BOLT	3
350	450890-01	NIPPLE (7/16 - 156S)	2
360	7920-0002	TIE	2
370	469169-01	PLATE (L)	1
380	462213-01	BOLT	3
390	FNH106S0	HEX NUT	3
400	FWPL06S0	FLAT WASHER	3
410	FWSP06S0	SPRING WASHER	3
420	457008-04	POLYESTER TUBE (Co2 GAS, 3 m)	1
430	462617-05	BRAIDED HOSE (2 m)	1
440	456710-01	LIQUOR PIPE	1
450	424348-01	NIPPLE 1/4	1

TOWER STYLE & BRAND TBD



NOTE: ACCESSORY OPTION



Not to scale