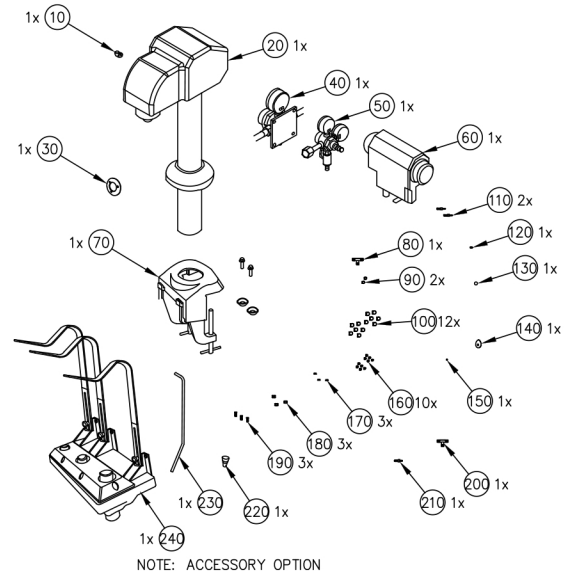


Receiving

- Conduct site survey to confirm unit can be installed
- Verify a loading dock or forklift is available
- Remove straps, padding, and/or crating material
- Inspect for damage

Highball Valve

- Install Valve (Tower) on the counter
 - Set the valve body to clamp
 - Install valve on the counter
 - There are four (4) lines from valve, but two (2) circulating lines for the machine are not used
 - Lines should be marked for soda water and liquor
- Carbonated Water Hose Connection
 - Tee off Co2 hose for syrup in the existing soda gun system to get a Co2 hose for the liquor hose
 - Insulate carbonated water and liquor lines from ice bin to tower
 - Depressurize system and tee chilled carbonated water hose coming from under the ice bin and connect to carbonated hose of tower
- Liquor Hose Connection
 - Install a Flojet pump for the liquor up into the dispenser
 - Install the hose connecting the liquor bottle to the inlet of the pump. From the outlet of the pump it connects to the inlet of the ice bin
 - The hose from the outlet connector, under the ice bin needs to connect to the liquor hose to the valve. Insulate the hose
 - Set up the parts to branch the hose
 - Connect the Co2 hose to the Co2 inlet of the Flojet pump
 - Tools needed: Hoses for carbonated water, liquor, and parts for teeing the hose, insulation for the liquor and carbonated water hoses coming out of the ice bin



Materials

ITEM NO.	PART NUMBER	DISCRIPTION	QTY.
10	269970P01	HANDLE, DSU25	1
20	CFD-SPD-BNA	FASHION DRAFT, NSF APPROVED	1
30	469169-01	PLATE/RING, STAINLESS STEEL 304	1
40	18-0800	REG. SEC. SODA, WALLMOUNT, 1/4 INLET, 1/4 OUTLET, W/ CHECK	1
50	18-0048/02	REG ASSY, CO2, TANK MNT, HP, 1/4 IN	1
60	T5000-140	FLOJET BIB PUMP, 1/4 BARBSS SYRUP OUT, 1/4 BARB GAS IN	1
70	CLP-1B	HIGHBALL COUNTER ADAPTER -- FOR DSU	1
80	01-0527/01	TEE, SS, 3/8B - 3/8B x 1/4B	1
90	16700984	CLMP, STPLS, OETIKER, 8.0	2
100	07-0409	CLMP, STPLS, OETIKER, 31/64	12
110	7117	SS SPLICER 1/8 BARB x 1/4 BARB	2
120	458560-02	SCREW, M4x12, 10	1
130	473388P01	CAP, PLASTIC	1
140	482558M01	PLATE, HANDLE, DSU25	1
150	04-0989	WASHER, LOCK, SPLIT, 8-32, SS	1
160	07-0438	CLAMP, STPLS, OETIKER, 21/32	10
170	05-0011/01	WASHER, SEAL, FLR, NYLON, 1/4	3
180	01-0221/02	STEM, 1/4 BARB FOR 1/4 NUT, SS 304	3
190	01-0222/02	NUT, SWIVEL, 1/4 x .297ID, NP	3
200	01-1280/01	TEE, SS, 1/4 BARB	1
210	01-0594/02	SPLICER, SS, 1/4 BARB x 3/8 BARB	1
220	450848-01	CAP, BOTTLE	1
230	456710-01	PIPE, LIQUOR	1
240	8000247	RESERVE 3-BOTTLE - FOR SHURFLO	1
250	28-3105	GUIDE, INSTALL, HIGHBALL, BEAMTOWER	1
260	90-0395	CARTON, 20x18x22	1
270	90-0004	BAG, 9 x 15, CLR PL	3
280	08-0349	TUBING, WHITEIN, .265 x .457, 500FT	20
290	08-0351	TUBING, WHITEIN, .375 x .635, 300FT	6

Testing

- Pour and test drink quality
 - Ratio should be set at - Toki, Roku, and Haku = 3:1
 - Ratio should be set at - Jim Beam, Hornitos, and El Tesoro (Tequila) = 4:1

Troubleshooting

- Low carbonation / flat drinks - Out of Co2, pressure set below 105 psi, or no ice on cold plate
- No carbonated water, just Co2 - carbonator timed out or unplugged
- No carbonated water or spirits - Handle not making contact with paddle arms
- Foamy drinks - No ice on cold plate
- Too strong or too weak - check ratio