

The following steps illustrate installation of the inlet insulation kit.

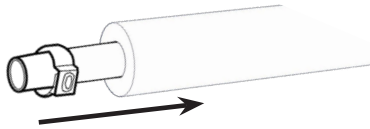
## Installation

**Inlet Insulation Kit (Part # 82-7433) includes:**

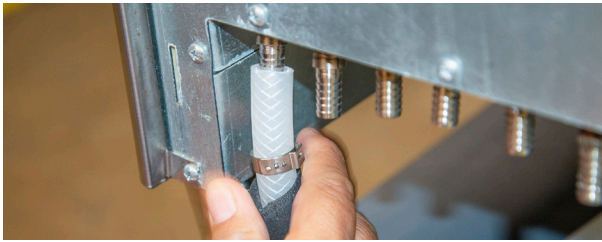
Part #	Description	Qty
88-0003	Tube Insulation .500ID x .250WL	8

### Steps to Install Inlet Insulation:

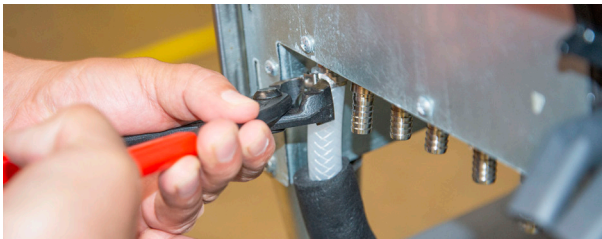
1. Slide foam insulation and Oetiker clamp onto inlet tubing.



2. Attach tubing to leftmost inlet.



3. Use Oetiker pliers to crimp clamp.



4. Slide foam insulation up until inlet is covered.



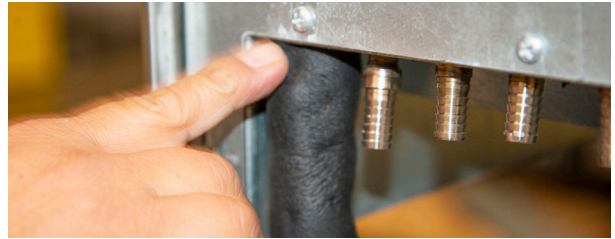
### Tools Required

- Oetiker Clamps
- Oetiker Pliers

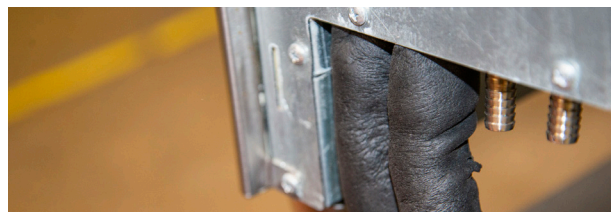
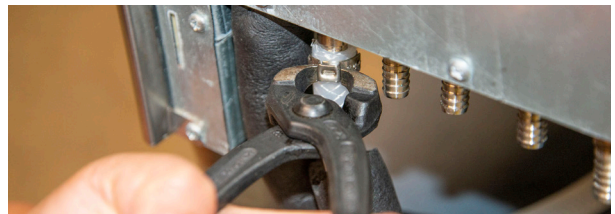
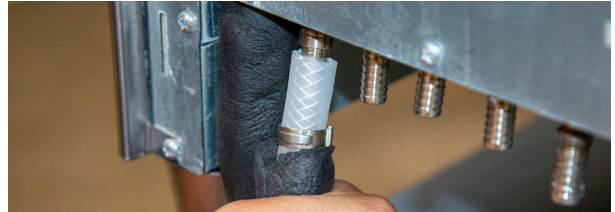
### NOTE

Starting on the leftmost side will ensure sufficient room to complete install.

5. Ensure there is no gap between unit and insulation.



6. Repeat for the seven (7) remaining inlets.



---

For more information visit [lancerworldwide.com](http://lancerworldwide.com) or call Tech Support/Warranty: 800-729-1550

6655 Lancer Boulevard • San Antonio, TX 78219 • [custserv@lancerworldwide.com](mailto:custserv@lancerworldwide.com) • ©2022 Lancer Corp. • Manual PN: 28-3149 • Rev 00-0, 6/3/2022