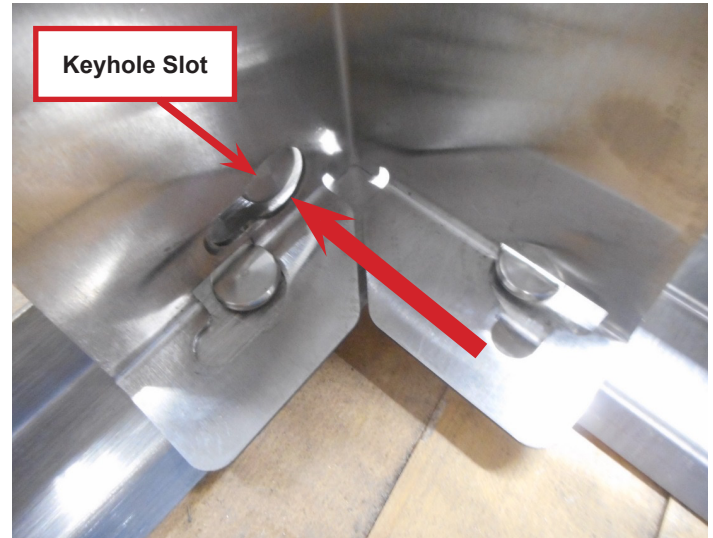
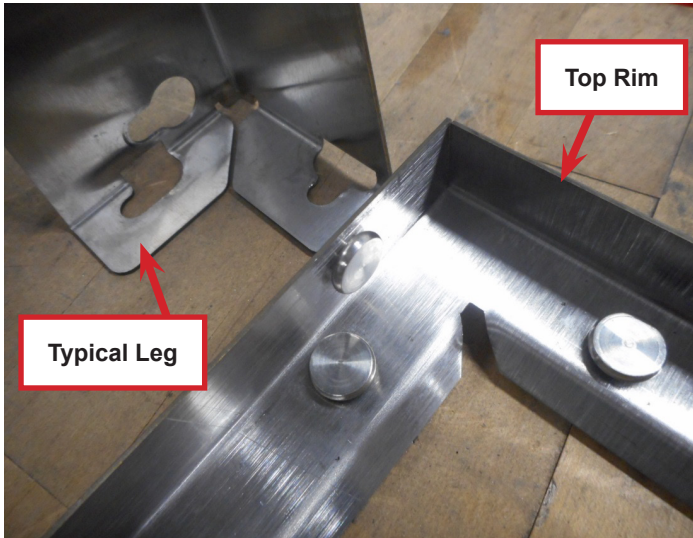


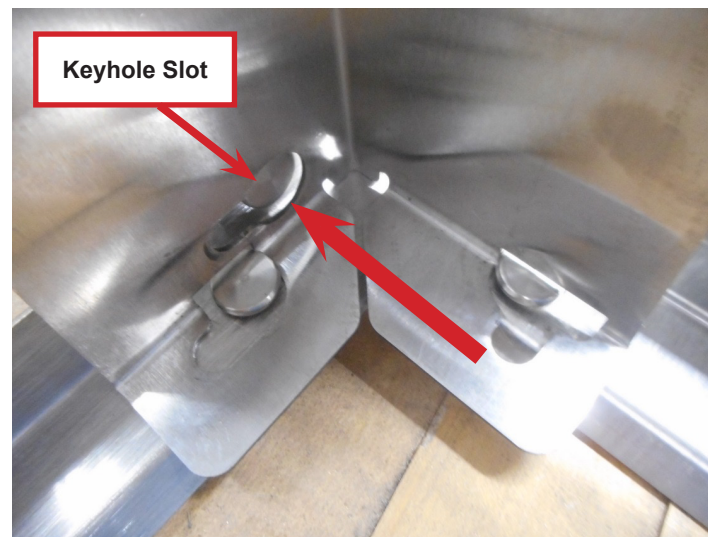
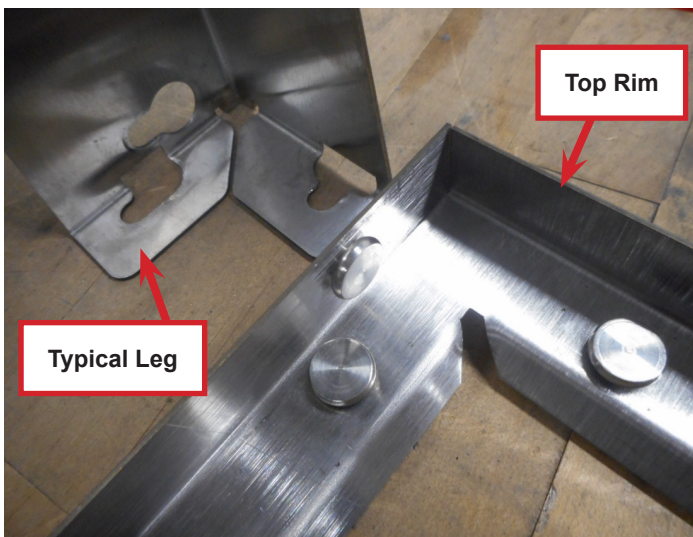
*The following illustrates the steps necessary to install the updated Leg Stand Assemblies for both the 1522 and 2123 Ice Chests.*

1. Remove top rim and leg assembly and place on flat surface.
2. Align keyhole slot of leg with the rim button against inside edge of the top rim.

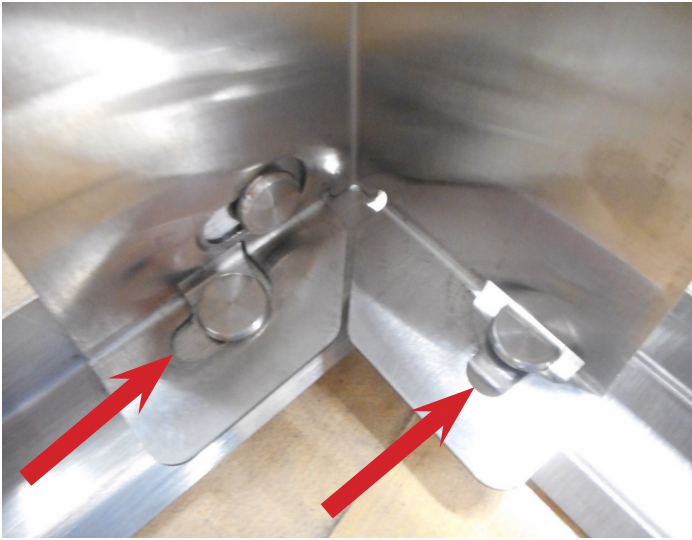


*The following illustrates the steps necessary to install the updated Leg Stand Assemblies for both the 1522 and 2123 Ice Chests.*

1. Remove top rim and leg assembly and place on flat surface.
2. Align keyhole slot of leg with the rim button against inside edge of the top rim.



3. With the leg against the inside edge of the top rim, use a rubber hammer or mallet to engage all three (3) rim buttons in the elongated slots.

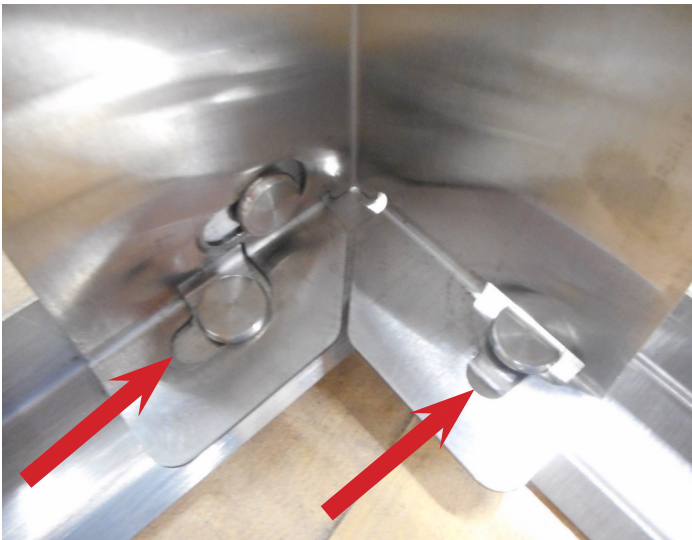


4. Once leg is secured to the inside edge of the top rim, repeat steps 1-3 for the remaining three (3) legs.

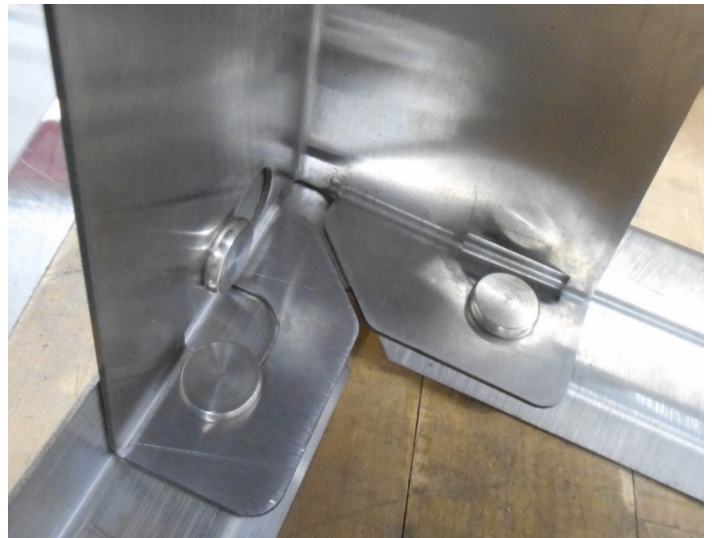


Lancer Corp., 6655 Lancer Blvd., San Antonio, Texas 78219 - 800-729-1500 - Technical Support/Warranty: 800-729-1550  
custserv@lancercorp.com - lancercorp.com - Manual PN: 28-0974/01 - August 2017  
"Lancer" is the registered trademark of Lancer © 2017 by Lancer, all rights reserved.

- 
3. With the leg against the inside edge of the top rim, use a rubber hammer or mallet to engage all three (3) rim buttons in the elongated slots.



4. Once leg is secured to the inside edge of the top rim, repeat steps 1-3 for the remaining three (3) legs.



Lancer Corp., 6655 Lancer Blvd., San Antonio, Texas 78219 - 800-729-1500 - Technical Support/Warranty: 800-729-1550  
custserv@lancercorp.com - lancercorp.com - Manual PN: 28-0974/01 - August 2017  
"Lancer" is the registered trademark of Lancer © 2017 by Lancer, all rights reserved.