



**UNPLUG THE DISPENSER BEFORE  
FOLLOWING THESE INSTRUCTIONS TO  
PREVENT AUTOMATIC AGITATION  
FROM OCCURRING.**

The Ice Flow Regulator Kit (PN 82-3949) allows you to reduce the ice portion that dispenses when the ice lever is pressed. Install the Ice Flow Regulator to the wheel shroud located in the dispenser's bin. Installation of the Ice Flow Regulator is not necessary to dispense ice. Install the regulator only if ice flow reduction is desired.

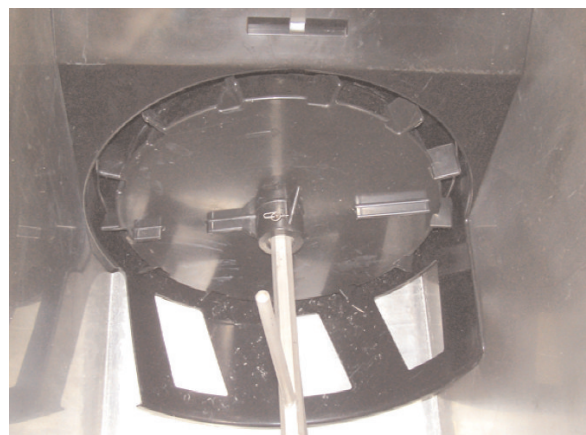
**The Ice Flow Regulator Kit contains:**

51-5305/01	Ice Flow Regulator Assy
04-1030	Adjustment Screw
03-0307	Retainer Ring, Stud
04-1031/01	Stud
03-0306	Retainer Ring, Screw

**TO INSTALL THE ICE FLOW REGULATOR:**

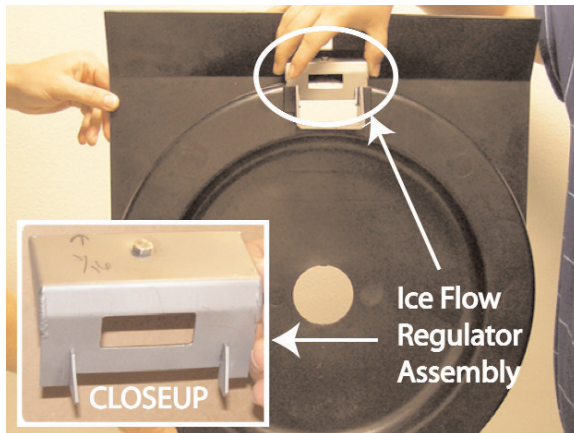


**1. Remove front and back lids from top of dispenser.**



**2. Remove agitator pin, retainer pin, agitator, dispensing wheel, and wheel shroud.**

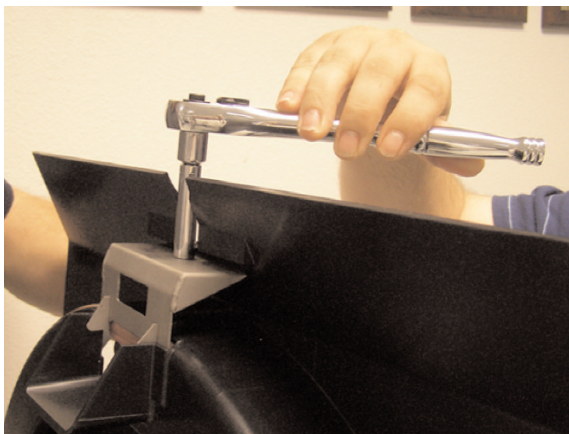
**CONTINUED ON NEXT PAGE**



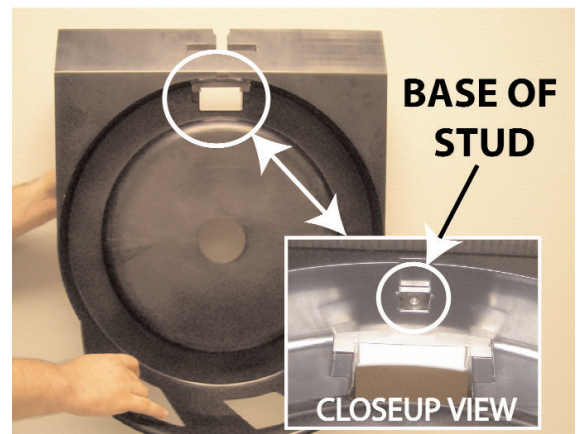
**3.** Insert the Ice Flow Regulator Assembly into the shroud slot from top.



**4.** Insert stud into wheel shroud from bottom and screw into place.

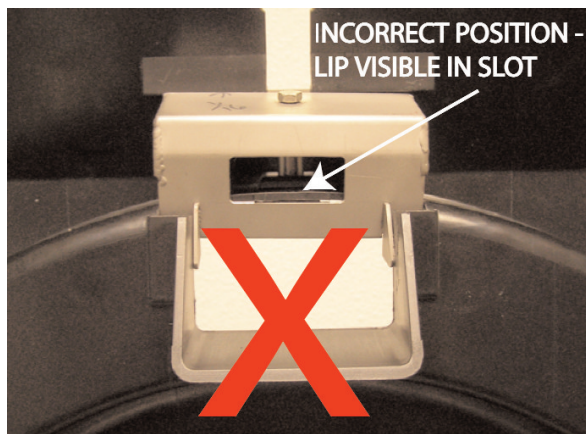


**5.** Secure stud using socket wrench or nutdriver.

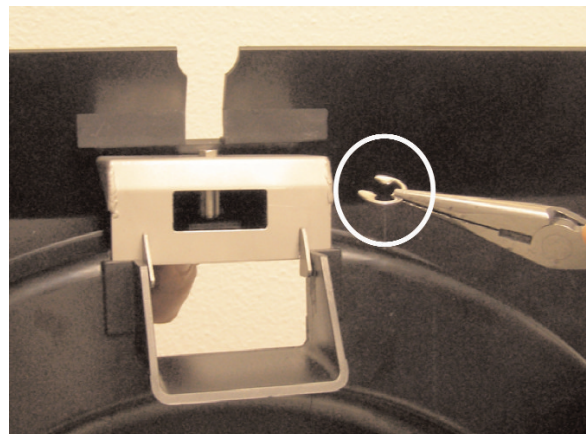


**6.** Ensure base of stud fits securely into slot.

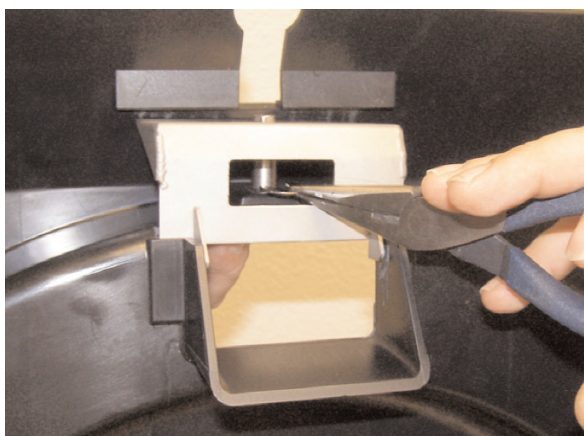
**CONTINUED ON NEXT PAGE**



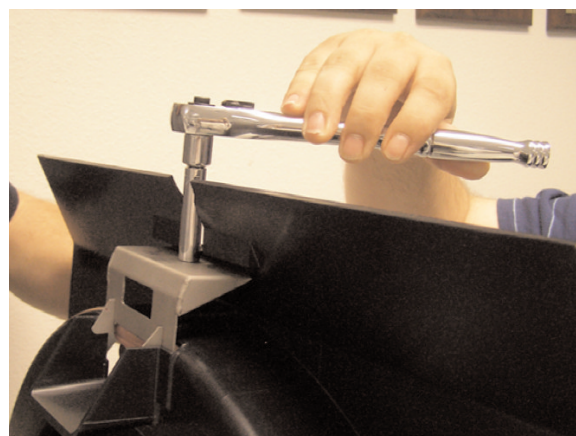
**7. Ensure ice flow door is not caught on lip.**



**8. Locate E-clip.**



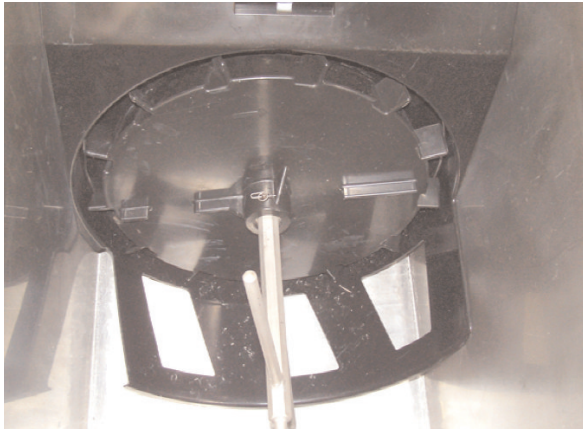
**9. Secure stud with E-clip.**



**10. Adjust ice regulator to desired position by turning the stud clockwise to close or counterclockwise to open.**

**CONTINUED ON NEXT PAGE**





**11.** Reinstall wheel shroud, dispensing wheel, agitator, retainer pin, and agitator pin.



**12.** Reinstall bin lids.



**13.** If at a later date you need to re-adjust the ice flow, you can do so via the access slot in the top of the wheel shroud. You do not need to disassemble the wheel assembly.