

*The following illustrates the steps necessary to switch the existing Fluorescent light bulbs with an LED light bar assembly for Flavor Select (FS) 30" and Blue Star CB Series 22", 25", and 30" units.*

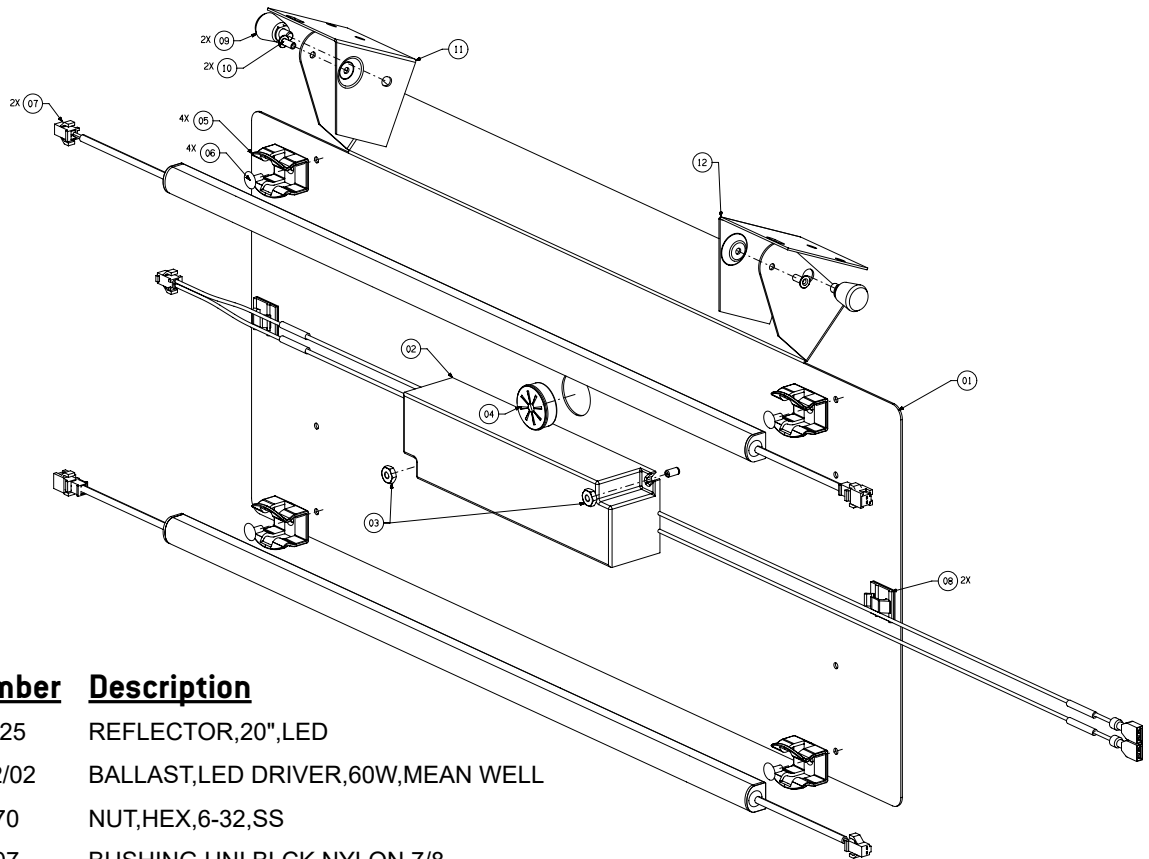
#### NOTE

The installation and relocation, if necessary, of this product must be carried out by qualified personnel with up-to-date safety and hygiene knowledge and practical experience, in accordance with current regulations.

#### ⚠ WARNING

RISK OF ELECTRIC SHOCK. Only qualified personnel should service internal components of electrical control housing.

### Kit Contents - 82-5263



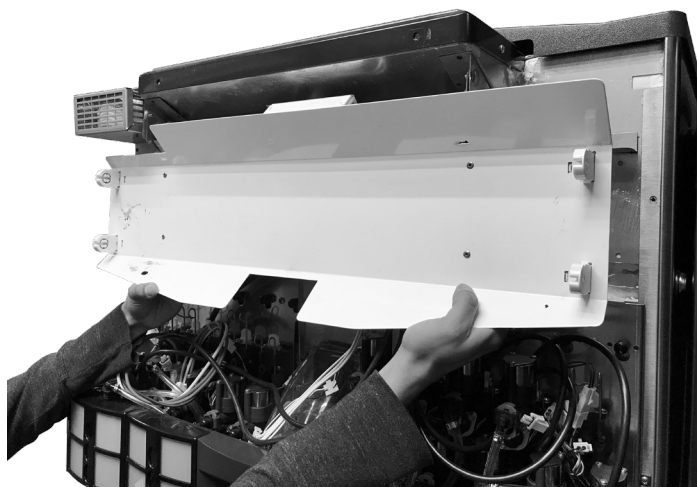
Item	Part Number	Description
01	30-13225	REFLECTOR,20",LED
02	12-0652/02	BALLAST,LED DRIVER,60W,MEAN WELL
03	04-0370	NUT,HEX,6-32,SS
04	13-0207	BUSHING,UNI,BLCK,NYLON,7/8
05	05-3528	CLIP,SNAP,SINGLE SCREW,CLEANLIFE,LED
06	05-3534	RIVET,PLASTIC,1/8 DIA X .321 LENGTH,BLACK X-MAS TREE
07	12-0643	LED,LIGHT BAR,18 INCH,9.5W,24VDC
08	03-0300	CLIP,WIRE,ADHESIVE,HEYCO,IBD
09	03-0365	LATCH,.187 DIA
10	04-0072	RIVET,.125DIA X .312,SS
11	30-16026	BRACKET,HINGE,LEFT,FS-IBD
12	30-16027	BRACKET,HINGE,RIGHT,FS-IBD

# Replacing Fluorescent Reflector with LED Reflector

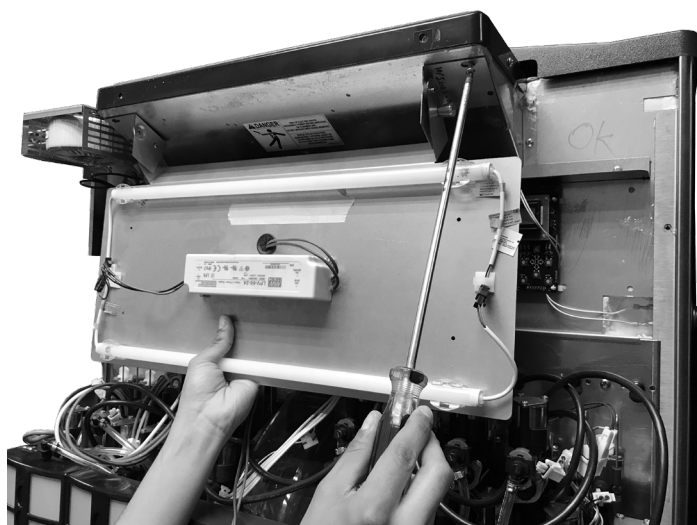
## ⚠ WARNING

Disconnect power from unit prior to servicing or cleaning.

1. Unplug unit power cord from wall outlet to power down unit.
2. Remove the merchandiser and fluorescent bulbs from the unit.
3. Remove the cover panel from the unit control board.
4. Disconnect the fluorescent reflector harness from the unit control board.
5. Unscrew the reflector and remove from unit.



6. Install the new reflector assembly to the unit.



7. Using the pins towards the top of the reflector assembly, flip up the reflector and lock in place.

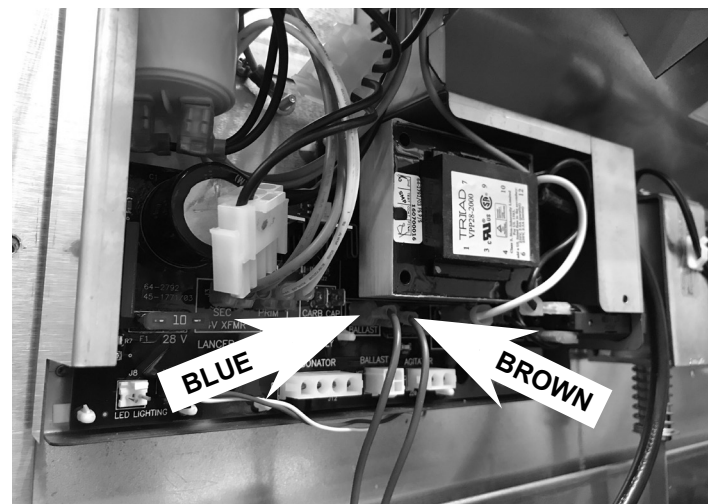
## NOTE

For Flavor Select (FS) units, follow steps 8 - 9 to connect LED driver to control box. For Blue Star units, follow steps 10 - 12 to connect the LED driver to the control board.

8. **For FS Units ONLY:** Connect the brown and blue wires of the LED driver harness to the "Ballast" connection on the control board.

## ⚠ ATTENTION

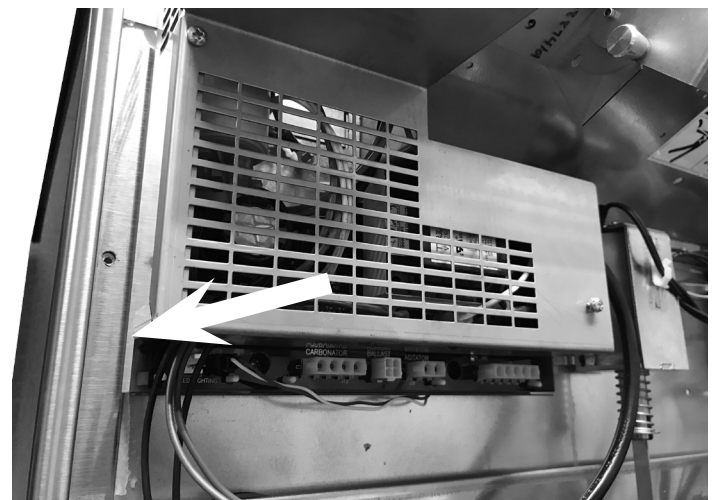
Connect the blue wire to the left side ballast connector and the brown wire to the right side ballast connector.



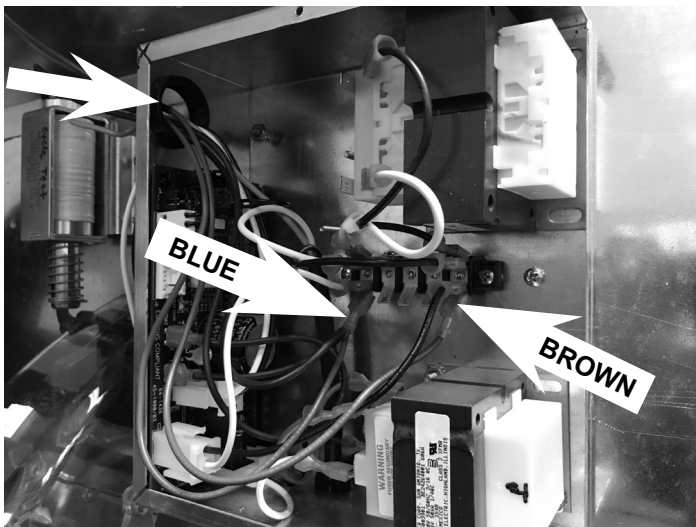
9. Route the connected harness of the LED driver to the left side of the control box and re-install the control box cover.

## ⚠ ATTENTION

Make sure control box cover is properly installed and is not pinching any excess wires.



10. **For Blue Star Units ONLY:** Route the blue and brown wires of the LED driver into the cutout in the left side of the control box.
11. Plug the blue wire of the LED driver harness into the **left** side of the terminal block and the brown wire into the **right** side of the terminal block.



12. Re-install the control box cover to the control box.

**⚠ ATTENTION**

**Make sure to not pinch any excess wires when re-installing the control box cover.**

13. Use the pins on the left and right side of the reflector assembly and flip down the reflector.
14. Re-install the unit merchandiser and plug in the unit to test installation.