

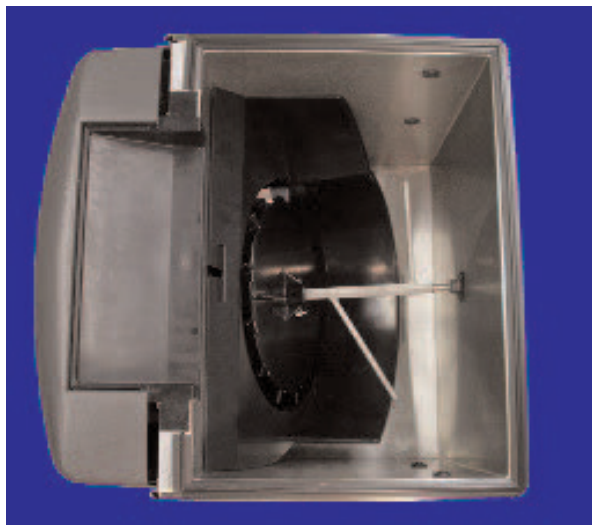
The following illustrates how to convert Flavor Select units manufactured after April 18, 2005 from cubed ice to pellet ice dispensers.

Setup Installation

WARNING

Before beginning installation, disconnect electrical power to dispenser as well as water and drain lines to the icemaker.

1. Disconnect power to the dispenser.
2. Remove merchandiser by lifting and pulling back:
3. Remove icemaker, adapter plate (if applicable), and bin stat from top of the dispenser. See icemaker manufacturer instructions for icemaker removal.
4. Remove ice from ice bin.



5. Remove the agitator pin clip and pin.



6. Remove the cube agitator bar. Push the agitator towards the rear of machine to disengage it from the wheel. Pull the agitator to the side to clear the wheel hub.



7. Pull the agitator towards the front of the machine to disengage from the back bearing. Remove the cube dispensing wheel.



8. Remove the ice shroud.

9. Install the extension assembly (**IBD ONLY**).



10. Remove gasket. The base unit is now ready for Pellet Kit Installation.



Pellet Kit Installation

1. Insert ice shroud into ice bin.



2. Seat ice shroud into ice bin.



3. Push the ice shroud back towards rear wall so that the ice chute clears the top wall of the ice bin. Push the ice shroud into the ice bin. Ensure the ice chute fits into the ice chute opening in the ice bin.



4. Install the pellet dispensing wheel. Ensure pin holes are aligned.



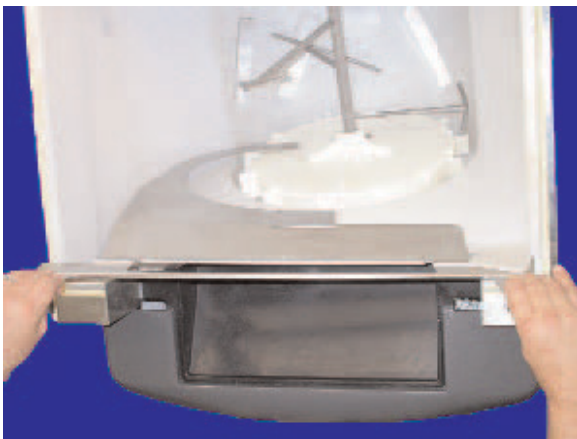
5. Install the pellet agitator assembly: insert the end of the agitator into the bearing on the back wall. Push agitator towards rear to allow clearance between the agitator and wheel hub. Align agitator pin hole with wheel pin hole. Fit agitator to the wheel hub.



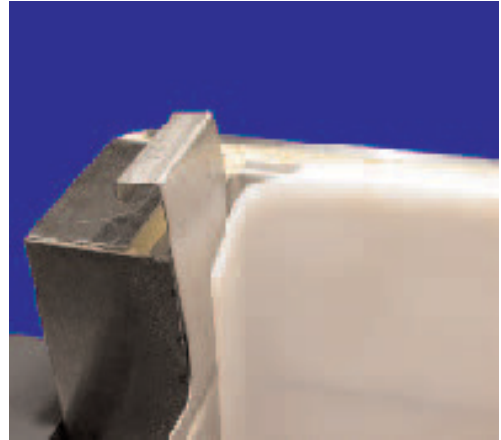
6. Reinstall agitator pin.



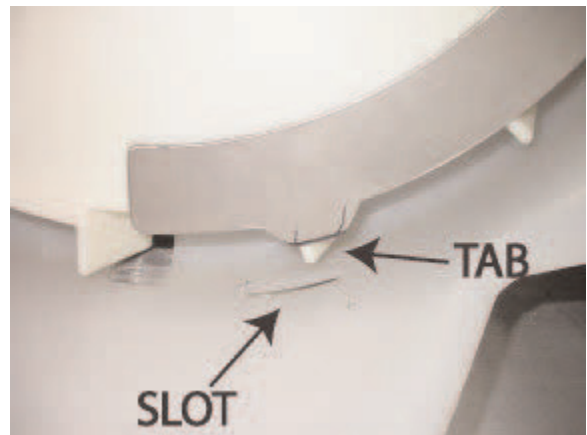
7. Reinstall agitator clip and lock.
8. Install the shield. Hold the shield so that the hooks are facing the front of the machine.



9. Slide the shield into the ice shroud ensuring the shield is captured between the ice shroud and the ice bin at the top left and right corners.



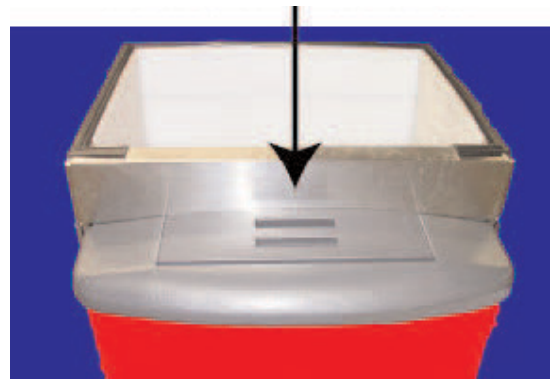
10. Ensure the tab at the bottom of the shield aligns with the slot at the bottom of the ice shroud. Ensure the tab fully seats.



11. Reinstall gasket.



12. Install the front block of the extension assembly. Hook the hooked side of the front block under the main extension. Ensure the front block fits flush with the main extension.



13. Install adapter plate to support the icemaker.

NOTE

A sticker on top of the adapter plate indicates which side points front based on the icemaker installed.

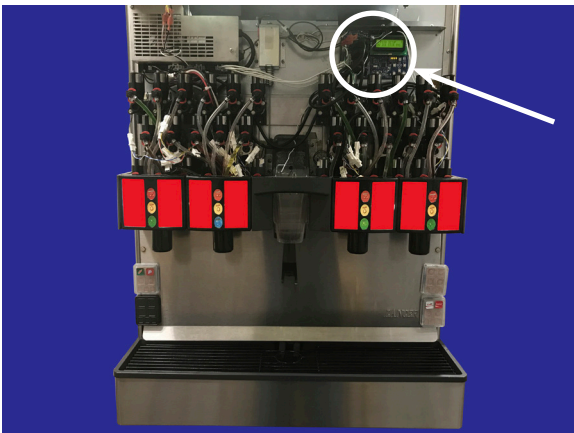
14. Reinstall bin stat and icemaker.

Ice Type Settings & Agitation Times - FS

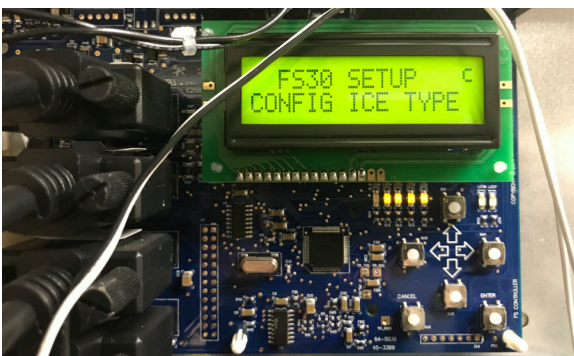
NOTE

The following highlights the necessary steps to change the ice type settings and agitation times on the FS.

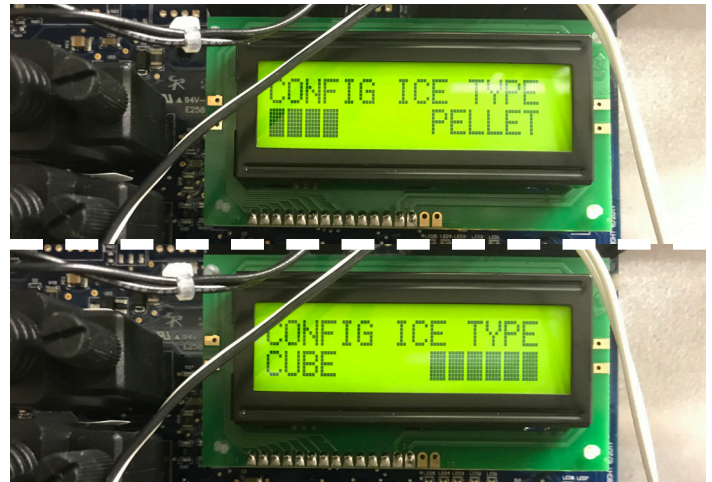
1. Plug in the unit to grounded electrical outlet.
2. Once the unit is powered on, access the FS valve board.



3. Use the arrows on the valve board to navigate to the "CONFIG ICE TYPE" menu and press Enter.



4. Use the right arrow to change the ice type setting from "CUBE" to "PELLET" and press Enter.



5. Use the arrows to navigate to the "VW ICE STIR TMS" menu and press Enter.
6. Verify that the Ice Stir On setting is "4000" and the Ice Stir Off setting is "150".



7. Reinstall the merchandiser.

Part Listing

NOTE

USE COMPONENTS LISTED ON THIS PAGE WITH PELLET ICE ONLY. The kit contains the top cover assembly (PN 42-0109). Use cover with either a Scotsman or Hoshizaki pellet ice machine. Labels affixed to the top of this cover indicate the correct orientation for each machine.

FS22	FS30	ITEM	PART NO.	DESCRIPTION	QTY
X	X	1	02-0577	GROMMET, RUBBER, G3002	3
X	X	2	03-0368	RETAINER, PIN, AGITATOR, IBD	1
	X	3	05-2293/01	ICE SHROUD, IC	1
X		3	05-2325/01	LINER, BIN, IBD22	1
	X	4	23-1401	AGITATOR ASSY, HELICAL, IC, HEX	1
	X	6	42-0109	FOAMED COVER, SCOTS/HOSHI, PELLET ICE	1
X		6	42-0111	FOAMED COVER, 22"	1
	X	7	30-9446	ADAPTER, MECH BIN-STAT, SCOTS	1
	X	8*	82-3538*	ICE CHUTE ASSY, IBD30, PELLET ICE*	1
	X	9	82-3651	DISPENSING WHEEL ASSY, PELLET ICE, HEX	1
	X	10	30-9880	SHIELD, PELLET ICE, ONE, PIECE WITH TAB	1
X		10	30-9801/01	SHIELD, PELLET ICE, 22"	1
	X	11	30-8832/01	BRACKET, VALVE PLATE, FS30	1

NOTE

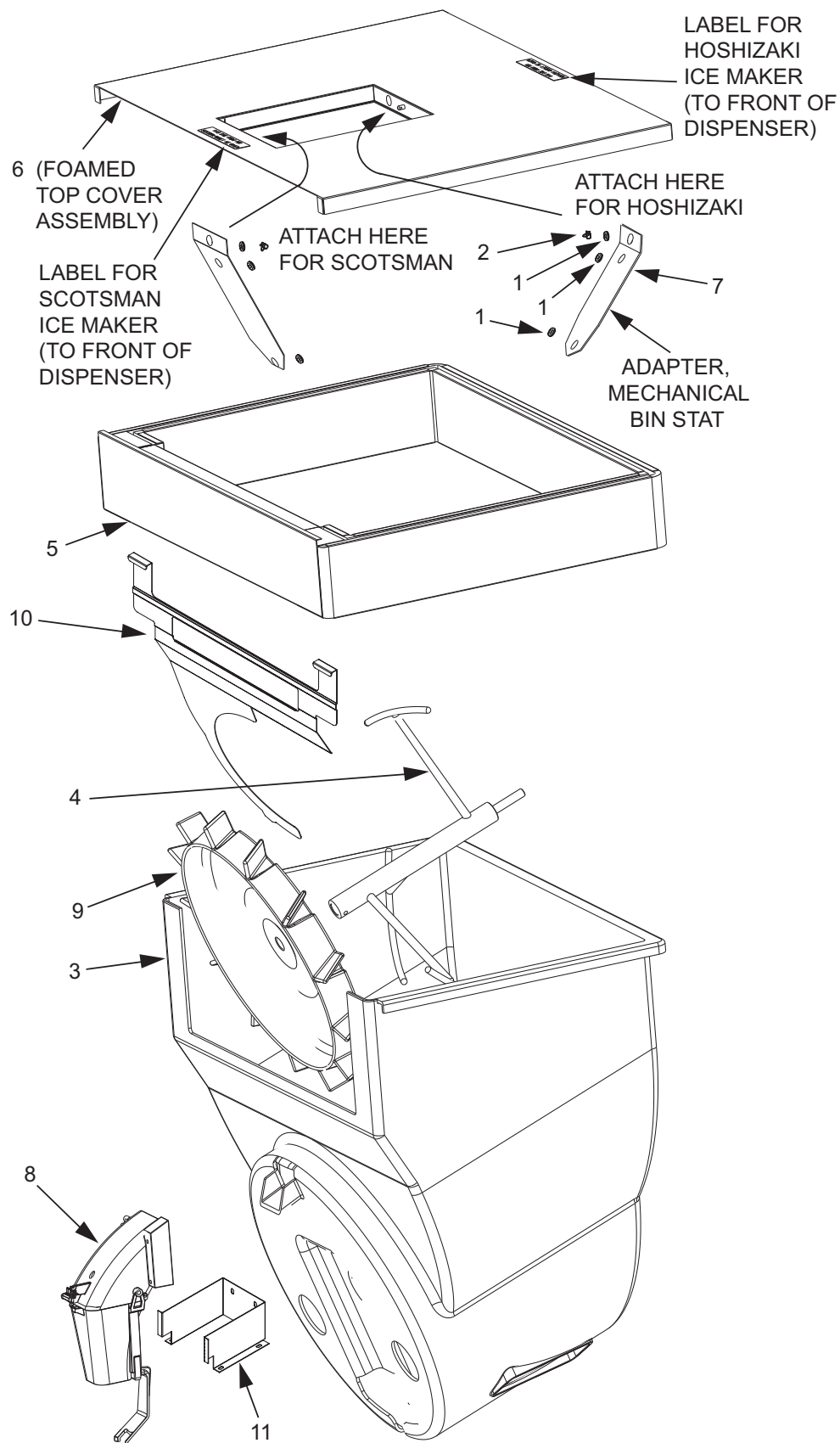
*ITEM 8: If dispenser has old ice chute, replace with new ice chute. If dispenser is an FS30, also replace item 11.

OLD ICE CHUTE



NEW ICE CHUTE





Lancer Corp., 6655 Lancer Blvd., San Antonio, Texas 78219 - 800-729-1500 - Technical Support/Warranty: 800-729-1550

custserv@lancercorp.com - lancercorp.com - Manual PN: 28-0700/03 - November 2018

"Lancer" is the registered trademark of Lancer © 2018 by Lancer, all rights reserved.