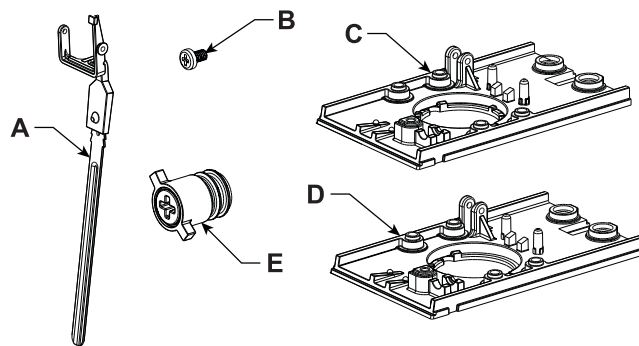


The following illustrates how to convert an existing Sure-Fill valve to an Easyfill Lever valve using the kit of parts provided.

Kit Contents

<u>Kit Part No.</u>	<u>Description</u>
82-4189	Kit, Easy-Fill Lever, 4.5 oz
82-4190	Kit, Easy-Fill Lever, 3.0 oz
82-4307	Full Kit, Easy-Fill Lever, 4.5 oz
82-4306	Full Kit, Easy-Fill Lever, 3.0 oz

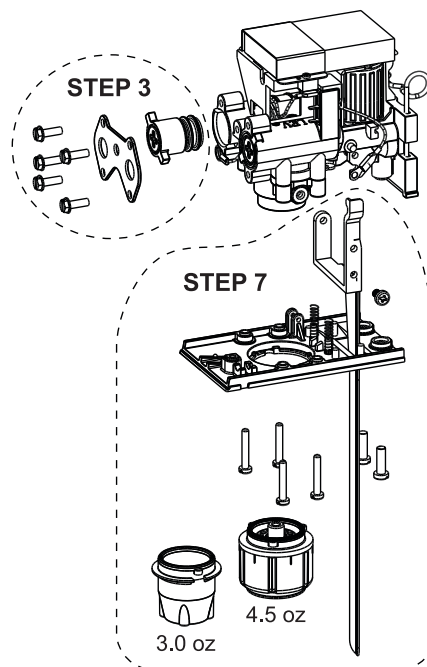


* O denotes part not found in Kit

Item	Part Number	Description	Qty	82-4189	82-4190	82-4306	82-4307
-	28-0813/02	Sht, Instruction, Easyfill	1	X	X	X	X
-	90-0004	Bag, 9 X 15, Clear Plastic	1	X	X	X	X
A	54-0479/01	Lever, Easyfill Assembly	1	X	X	X	X
B	04-0642	Screw, 6 - 32 X .250 PHD	1	X	X	X	X
-	04-0478/01	Screw, 2 - 28 X .250 PHD	1	X	X	O	O
C	05-1108/03	Plate, Bottom, GMV, 4.5 oz	1	X	O	O	X
D	05-0232/04	Plate, Bottom, GMV, 3.0 oz	1	O	X	X	O
E	82-2992/01	Plug Adj, Assembly SF	1	X	X	X	X

Remove Existing Sure-Fill Lever

1. Turn the key switch on the unit to the *OFF* position and unplug the 24 volt connection at the valve being converted.
2. Turn the mounting block shutoffs to the *CLOSED* position, lift the retainer, and remove valve.
3. Remove the five (5) screws securing the retainer, then remove existing Adjustment Plug assembly (*WATER ONLY*).
4. Install new Adjustment Plug assembly (PN 82-2992/01), supplied with kit.
5. Re-connect the retainer using the five (5) screws removed in Step 3. Verify white wire is connected.
6. Remove the existing nozzle and diffuser.
7. Remove the six (6) screws from the bottom plate, then remove bottom plate. Make sure to retain the two (2) springs on the bottom plate when removing.
8. Disconnect the gray wire from the existing lever and retain one (1) screw.
9. Remove and discard the existing Sure-Fill lever.



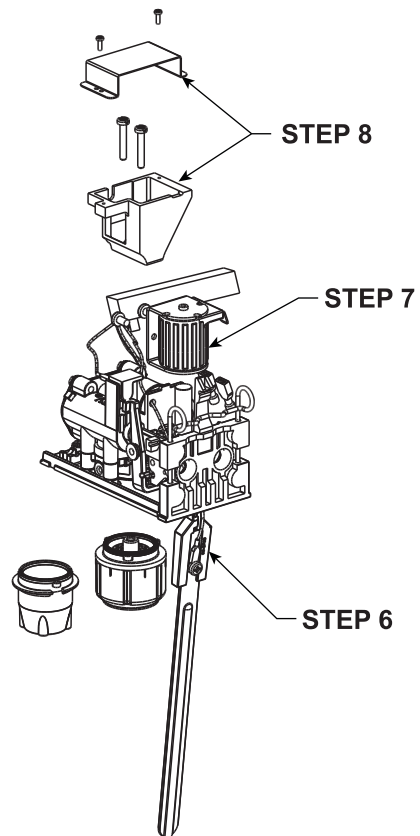
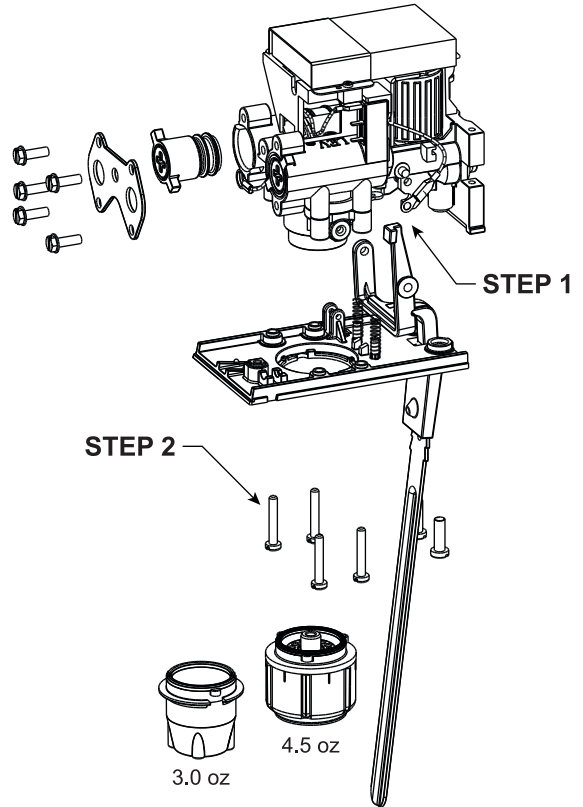
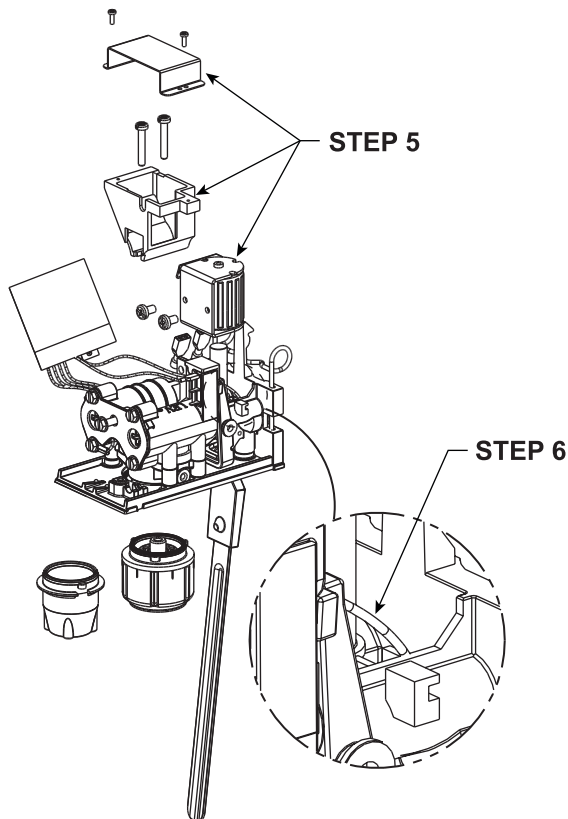
Install Easyfill Lever

1. Install new Easyfill lever (PN 54-0479/01) to valve upper body.
2. Install new bottom plate (PN 05-1108/03 or PN 05-0232/04) using the two (2) existing springs and secure with six (6) screws.
3. Re-install nozzle and diffuser.
4. Connect the gray wire to the new Easyfill lever.

NOTE

The gray wire must be routed down through the solenoid nest and behind the lever.

5. Remove the stainless steel retainer, PCB bracket, and solenoid from existing valve.
6. Feed the gray wire into the solenoid nest and lever then secure wire to Easyfill lever using screw (PN 04-0642) provided in kit.
7. Re-connect solenoid using two (2) existing screws, use caution to avoid pinching gray wire.
8. Re-assemble PCB bracket and stainless steel retainer.
9. Install valve to unit and turn the mounting block stut-offs to the *OPEN* position.
10. Re-connect the 24 volt connection and turn the key switch to the *ON* position.
11. Check the operation and adjust as needed.



Lancer Corp., 6655 Lancer Blvd., San Antonio, Texas 78219 - 800-729-1500 - Technical Support/Warranty: 800-729-1550

custserv@lancercorp.com - lancercorp.com - Manual PN: 28-0813/02 - July 2017

"Lancer" is the registered trademark of Lancer © 2017 by Lancer, all rights reserved.