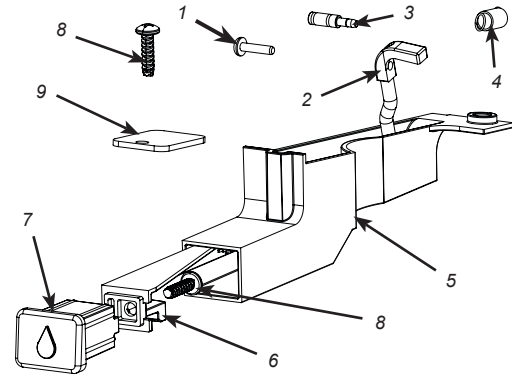


The following illustrates the steps necessary to install the new soda/water push button.

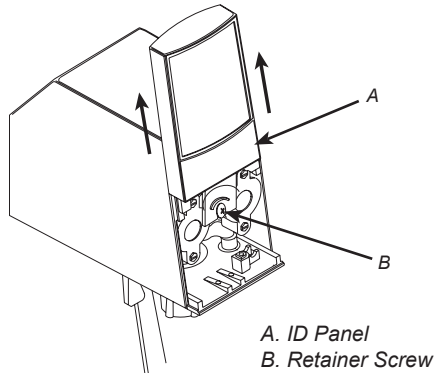
Conversion Kit: 82-6090 / CCP# 149215



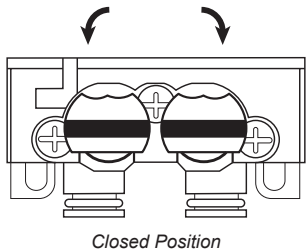
Item	Part No.	Description	Qty
01	04-0775	Lever Pin	1
02	05-3524	Soda/Water Lever, Short	1
03	04-0724	Spring Stud Pin	1
04	03-0238	Front Soda Lever Spring	1
05	05-4034	Soda/Water PB Housing	1
06	05-4035	Soda/Water PB Shaft	1
07	05-4041	Soda/Water Button	1
08	04-1643	Screw, 6 - 19 x 0.375	2
09	30-16137	Retainer	1
-	06-4003	Label Strip	1
-	28-3016	Instruction Sheet	1

Removal of Existing Water Lever

- Slide up on ID Panel to remove from valve.
- Loosen the retainer screw, in front of valve, to remove valve cover.

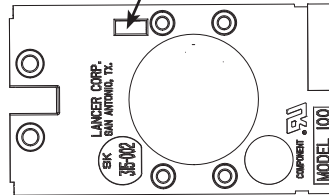


- If attached to unit, disconnect valve wire harness, close the valve stems on the backblock, and lift the retainer clip to remove valve from unit.

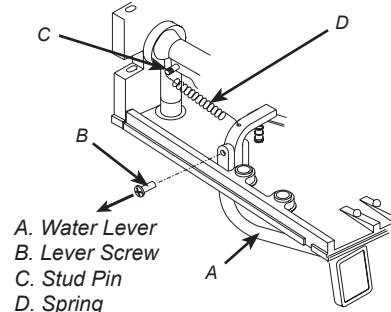


NOTE

For valves with no existing water lever installed, use a screwdriver to rupture the rectangular hole on the right side of the bottom plate, then skip to next section.

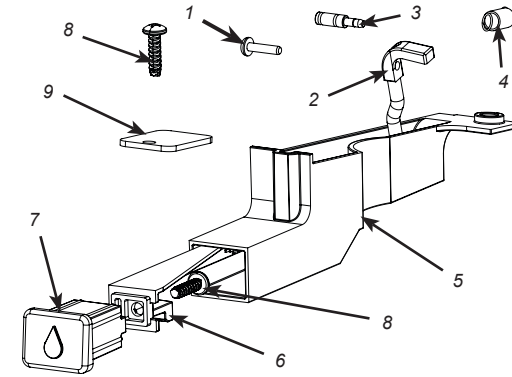


- Remove the spring from the existing water lever and stud pin.
- Unscrew existing water lever and slide off of bottom plate to remove.



The following illustrates the steps necessary to install the new soda/water push button.

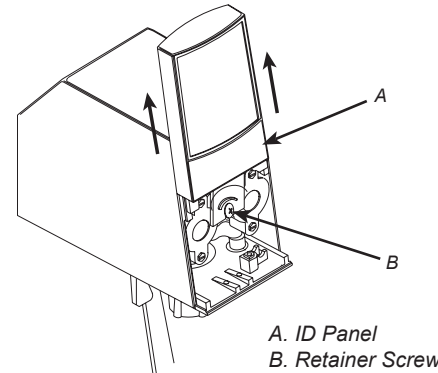
Conversion Kit: 82-6090 / CCP# 149215



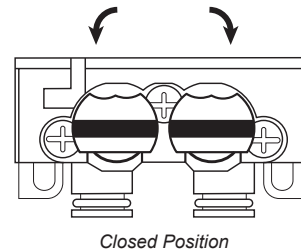
Item	Part No.	Description	Qty
01	04-0775	Lever Pin	1
02	05-3524	Soda/Water Lever, Short	1
03	04-0724	Spring Stud Pin	1
04	03-0238	Front Soda Lever Spring	1
05	05-4034	Soda/Water PB Housing	1
06	05-4035	Soda/Water PB Shaft	1
07	05-4041	Soda/Water Button	1
08	04-1643	Screw, 6 - 19 x 0.375	2
09	30-16137	Retainer	1
-	06-4003	Label Strip	1
-	28-3016	Instruction Sheet	1

Removal of Existing Water Lever

- Slide up on ID Panel to remove from valve.
- Loosen the retainer screw, in front of valve, to remove valve cover.

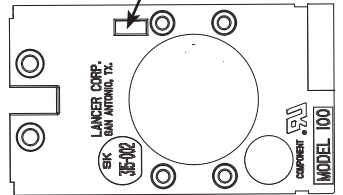


- If attached to unit, disconnect valve wire harness, close the valve stems on the backblock, and lift the retainer clip to remove valve from unit.

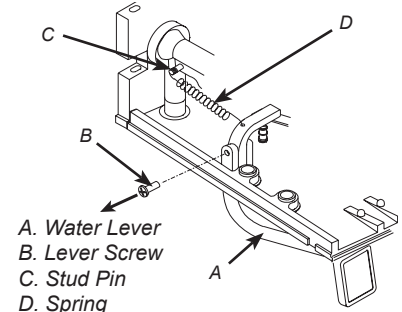


NOTE

For valves with no existing water lever installed, use a screwdriver to rupture the rectangular hole on the right side of the bottom plate, then skip to next section.



- Remove the spring from the existing water lever and stud pin.
- Unscrew existing water lever and slide off of bottom plate to remove.

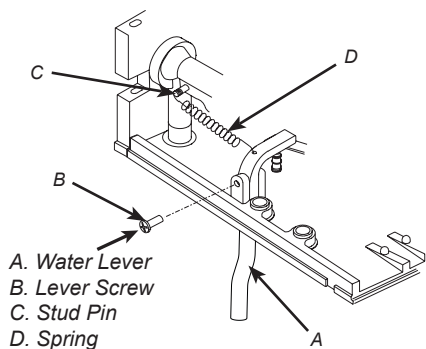


Install New Push Button

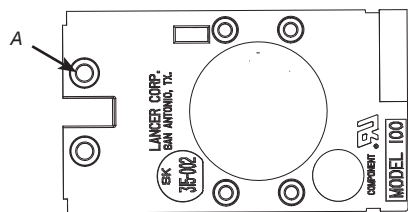
1. Slide new soda/water short lever (PN: 05-3524) into hole in bottom plate and attach to valve using the lever screw supplied with kit (PN: 04-0775).
2. Attach one end of lever spring provided (PN: 03-0238) into outer groove of existing stud pin and other end into hole on the top of the lever.

NOTE

If there is no existing stud pin, press new stud pin supplied with kit (PN: 04-0724) into hole in upper body of valve.

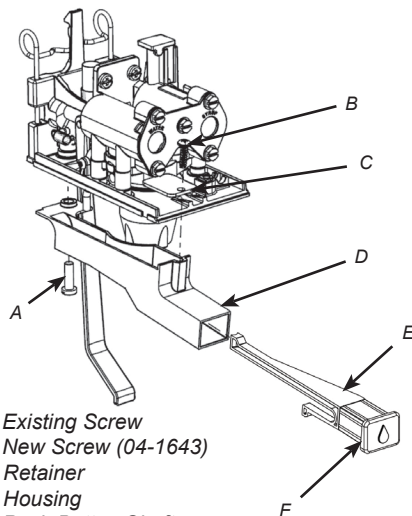


3. Unscrew back screw on the right side of the bottom plate.



A. Existing Back Screw

4. Use the existing back screw to secure push button housing (PN: 05-4034) to the bottom plate. Use the retainer (PN: 30-16137) and screw (04-1643) provided to clamp the housing to the front of the valve bottom plate.



5. Slide new soda/water push button into opening in front of housing until push button "clips" in place.
6. Re-attach valve with attached push button assembly to backblock and slide down retaining clip to secure to unit.
7. Re-connect valve wire harness and open the valve stems on the backblock.
8. After installing the Carma merchandiser, attach appropriate water or soda label to merchandiser above new push button.

Cleaning Instructions

1. Press release button located on bottom side of button housing.
2. Pull button out from the front.
3. Look for any debris or build-up on button and inside housing.
4. Clean button and housing with warm, soapy water.
5. Dry with none abrasive cloth.
6. Slide button into opening in front of housing until button "clips" in place.
7. Cycle button a few times to ensure sticking does not occur.

Lancer Corp., 6655 Lancer Blvd., San Antonio, Texas 78219 - 800-729-1500 - Technical Support/Warranty: 800-729-1550

custserv@lancercorp.com - lancercorp.com - Manual PN: 28-3016 - Rev 00-2 - January 2019

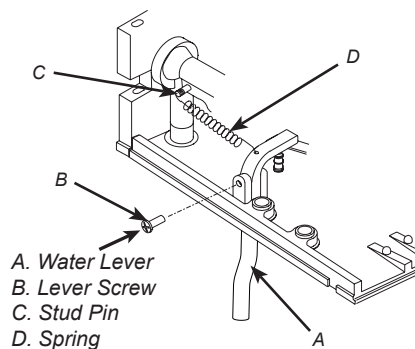
"Lancer" is the registered trademark of Lancer © 2019 by Lancer, all rights reserved.

Install New Push Button

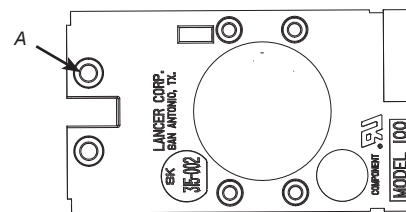
1. Slide new soda/water short lever (PN: 05-3524) into hole in bottom plate and attach to valve using the lever screw supplied with kit (PN: 04-0775).
2. Attach one end of lever spring provided (PN: 03-0238) into outer groove of existing stud pin and other end into hole on the top of the lever.

NOTE

If there is no existing stud pin, press new stud pin supplied with kit (PN: 04-0724) into hole in upper body of valve.

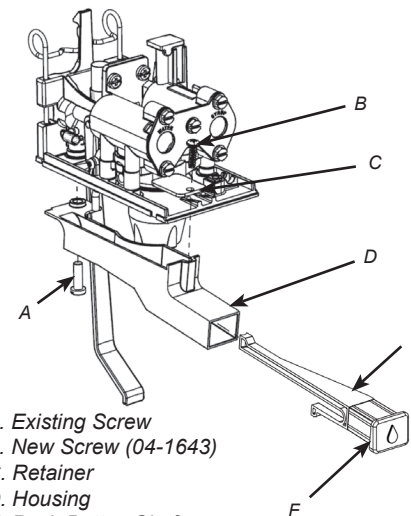


3. Unscrew back screw on the right side of the bottom plate.



A. Existing Back Screw

4. Use the existing back screw to secure push button housing (PN: 05-4034) to the bottom plate. Use the retainer (PN: 30-16137) and screw (04-1643) provided to clamp the housing to the front of the valve bottom plate.



5. Slide new soda/water push button into opening in front of housing until push button "clips" in place.
6. Re-attach valve with attached push button assembly to backblock and slide down retaining clip to secure to unit.
7. Re-connect valve wire harness and open the valve stems on the backblock.
8. After installing the Carma merchandiser, attach appropriate water or soda label to merchandiser above new push button.

Cleaning Instructions

1. Press release button located on bottom side of button housing.
2. Pull button out from the front.
3. Look for any debris or build-up on button and inside housing.
4. Clean button and housing with warm, soapy water.
5. Dry with none abrasive cloth.
6. Slide button into opening in front of housing until button "clips" in place.
7. Cycle button a few times to ensure sticking does not occur.

Lancer Corp., 6655 Lancer Blvd., San Antonio, Texas 78219 - 800-729-1500 - Technical Support/Warranty: 800-729-1550

custserv@lancercorp.com - lancercorp.com - Manual PN: 28-3016 - Rev 00-2 - January 2019

"Lancer" is the registered trademark of Lancer © 2019 by Lancer, all rights reserved.