

### 1. GENERAL INFORMATION

This instruction Sheet provides information to remove the old Liquid Level Control (LLC) Board Assembly from the carbonator, and to install a new LLC Board Assembly.

**⚠ WARNING** CARBONATOR MUST BE UNPLUGGED FROM POWER SOURCE BEFORE ANY COMPONENTS ARE REMOVED OR INSTALLED.

#### 1.1 Disassembly and Removal of Old LLC

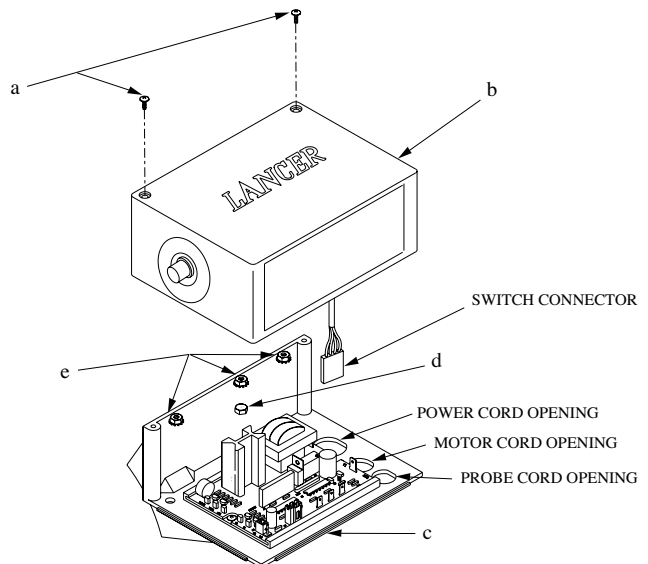
- A. Remove two (2) Enclosure screws and remove Cover.
- B. Unplug Probe wires. Remove Cord and Strain Relief from Enclosure.
- C. Remove Probe and Washer (if necessary).
- D. Remove KEPS Nut from middle stud on the Carbonator Tank.
- E. Unplug Power Cord connections from LLC Board.
- F. Remove Power Cord and Power Cord Strain Relief.
- G. Remove Ground Nut from middle stud on the Carbonator Tank.
- H. Unplug Motor Cord connections from LLC Board.
- I. Remove Motor Cord and Motor Cord Strain Relief.
- J. Remove the two (2) remaining KEPS nuts from the outer studs (one each stud).
- K. Remove the old LLC Board Assembly from the carbonator.

#### 1.2 Assembly and Installation of New LLC (see Figure 1)

- A. Lift off Cover from LLC Board. Temporarily set Cover aside.

**NOTE:** The Kit contains a bag of loose parts which contains three (3) KEPS Nuts, one (1) Ground Nut, and two (2) Enclosure Screws.

- B. Make any desired configuration changes. Refer to configuration section.
- C. Install the new Enclosure Subassembly (item c) to the three existing studs on the Carbonator Tank. Secure the Enclosure Subassembly with two (2) KEPS Nuts (item e) to the outer studs only. The KEPS Nut to secure the Enclosure Subassembly to the middle stud will be added in a later step.
- D. Install existing Motor Cord with Strain Relief to LLC Board.
- E. Reconnect Motor Cord leads to LLC Board.
- F. Install Motor Cord Ground Wire Terminal on to the middle stud on the Carbonator Tank.



**Installation of the Liquid Level  
Control Board Assembly  
Figure 1**

**⚠ This Instruction Sheet supersedes and replaces 28-0316/04, dated 06/20/97 ⚠**

LANCER CORP, 6655 Lancer Blvd., San Antonio, Texas 78219

To order parts, call Customer Service: 800-729-1500 - Warranty/Technical Support: 800-729-1550

Email: [custserv@lancercorp.com](mailto:custserv@lancercorp.com) - website: [www.lancercorp.com](http://www.lancercorp.com)

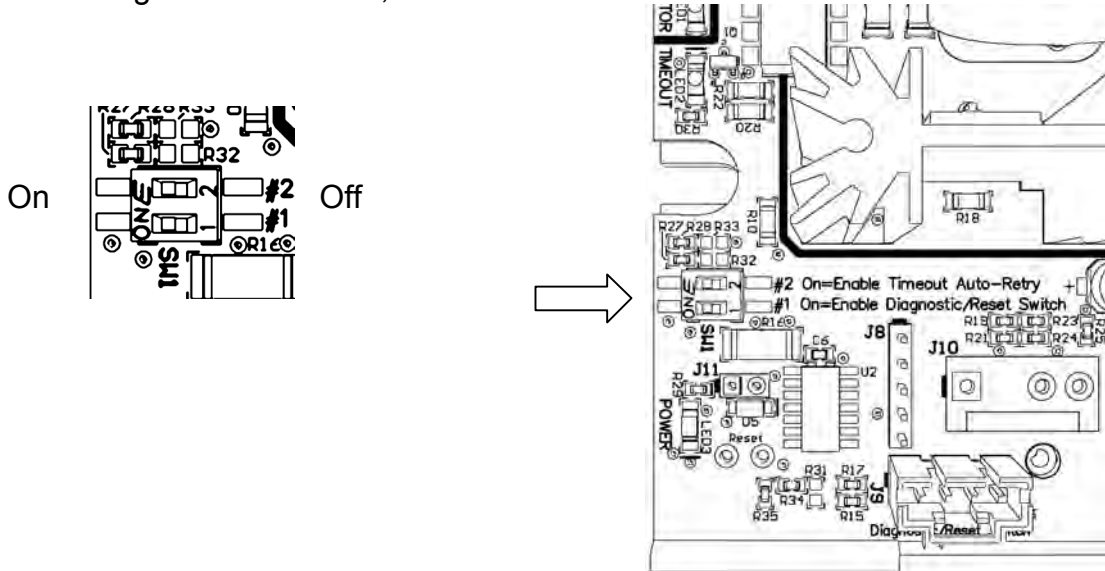
Manual PN: 28-0316/05 - DECEMBER 04, 2013

"Lancer" is the registered trademark of Lancer © 2014 by Lancer, all rights reserved.

**CONTINUED ON NEXT PAGE.....**

## 6. Configuration

The new carbonator PCB assemblies 64-5076 (230V) and 64-5081 (115V) have two configuration switches, located between the Power and Timeout LEDs:



These switches can be switched with a small screwdriver or a ballpoint pen. Toward the edge of the board is On, toward the center is Off.

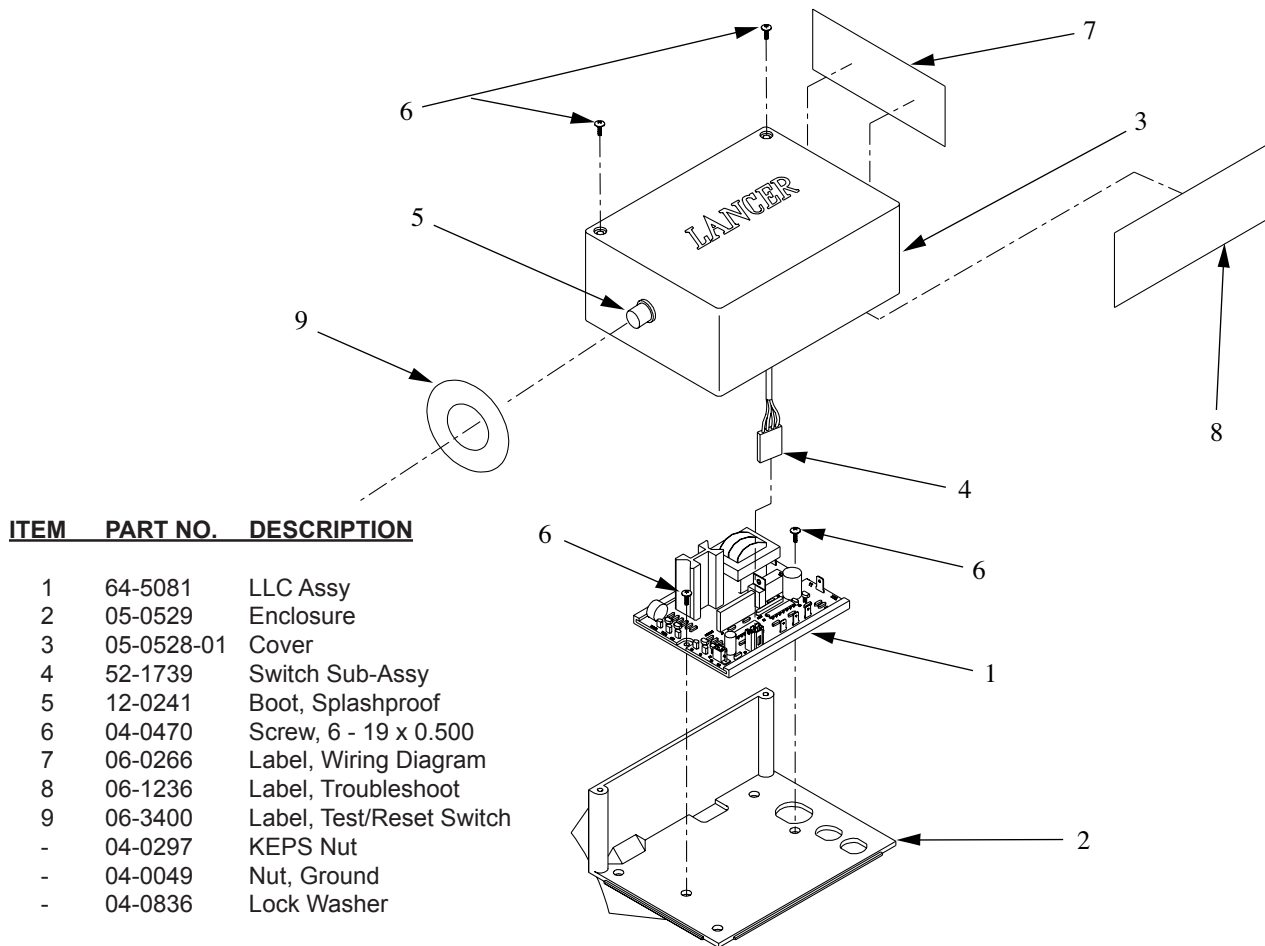
	On	Off
Pos 1 — Enable Diagnostic/Reset Switch	Switch must be connected to J9. Pressing and holding the switch connected to J9 will test the motor. Releasing the switch will reset any timeout.	J9 may be empty (no jumpers required). Any connected switch is ignored.
Pos 2 — Enable Timeout Auto-Retry	If the tank fails to fill within 3 minutes, the carbonator times out and will attempt to fill itself every 15 minutes for 3 hours. If it succeeds, normal operation will resume. The timeout LED will blink slowly within the 3 hours, then quickly after.	If the tank fails to fill within 3 minutes, the carbonator times out and never retries. The timeout LED will turn on continuously when the carbonator times out.

- G. Install the Ground Nut (item d) to the middle stud on the Carbonator Tank and tighten securely.
- H. Install Power Cord Strain Relief to LLC Board.
- I. Reconnect Power Cord leads to LLC Board.
- J. Install Power Cord Ground Wire Terminal on middle stud on the Carbonator Tank.
- K. Install the third KEPS Nut (item e) to the middle stud on the Carbonator Tank and tighten securely.
- L. Install washer on Probe fitting on Tank (if Probe needs replacing).
- M. Install Probe (PN 52-0590/01) on Tank (if Probe needs replacing).
- N. Install Probe Cord Strain Relief to LLC Board.

**NOTE:** The Probe Cord opening is next to the motor and power cord openings as illustrated.

- O. Install Probe Cord leads to the LLC Board: **Green to GND • Black to LO • White to HI**
- P. Install Cover by 1) attaching Switch Connector on the underside of the Cover to the mating connector on the LLC Board, and 2) sliding the cover over the LLC Board. Secure Cover with two (2) Enclosure screws.
- Q. Reconnect Plug to power source.

**NOTE:** When testing the Carbonator for proper operation, the water in the Carbonator Tank must be at the high level. To test the Carbonator, momentarily depress and release the Test Switch. The Motor should start and stop simultaneously with the depression and release of the Test Switch. At the same time, the orange LED on the board should also stop and start simultaneously with the depression and release of the Test Switch.



**Exploded View and Parts Listing  
Figure 2**

**⚠ Please refer to the Lancer web site ([www.lancercorp.com](http://www.lancercorp.com)) for information relating to Lancer Installation and Service Manuals, Instruction Sheets, Technical Bulletins, Service Bulletins, etc. ⚠**