



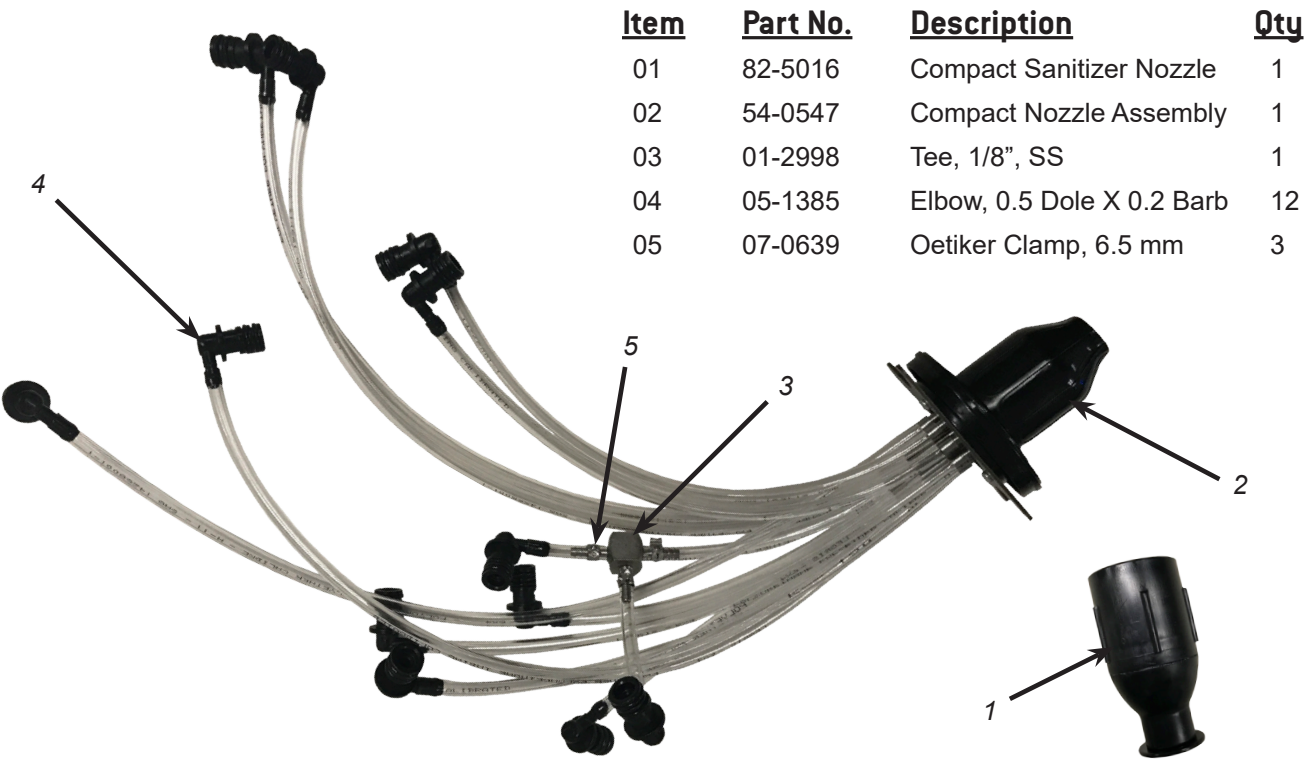
Bridge Tower Compact Nozzle Retrofit Kit

Instruction Sheet

The following illustrates how to replace the existing Bridge Tower nozzle assembly with the new compact nozzle assembly.

New Compact Nozzle Kit Contents - 82-5250

Item	Part No.	Description	Qty
01	82-5016	Compact Sanitizer Nozzle	1
02	54-0547	Compact Nozzle Assembly	1
03	01-2998	Tee, 1/8", SS	1
04	05-1385	Elbow, 0.5 Dole X 0.2 Barb	12
05	07-0639	Oetiker Clamp, 6.5 mm	3



Old Nozzle Assembly



Remove Existing Nozzle Assembly



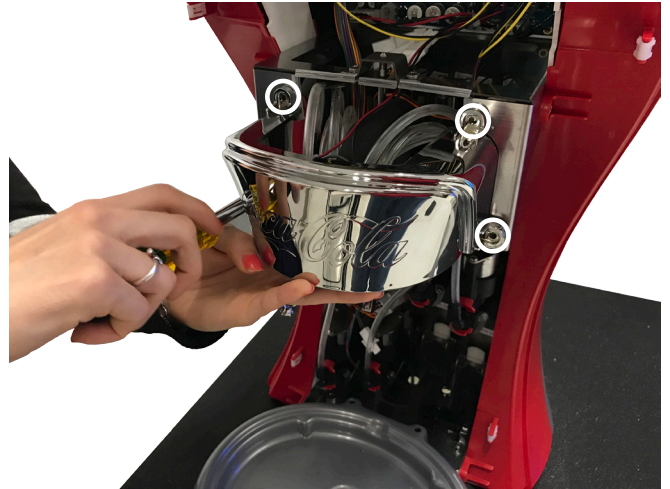
WARNING

DISCONNECT DISPENSER FROM POWER SOURCE BEFORE PROCEEDING

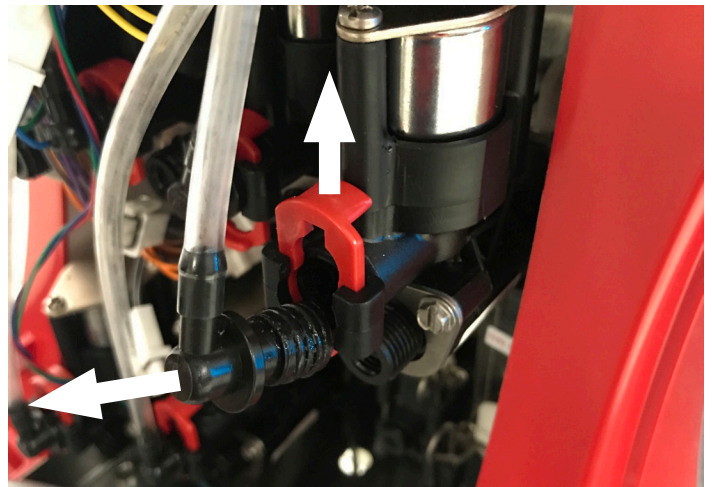
1. Unplug the unit from grounded electrical outlet.
2. Remove the splash plate from the front of the unit.
3. Twist the key-lock rod, located behind the splash plate, to unlock the head of the tower.
4. Lift the head of the tower and lock in place using the kick stand next to the tower hinges.
5. Remove the nozzle by twisting clockwise and pulling down.
6. Press one of the top retaining clips, located on the inside of the front panel, and simultaneously pull forward on the panel to unhook from the retaining clip. Repeat for remaining three front retaining clips.
7. Slide the front panel off of the dispenser by leaning the top of the panel forward then slide off of the dispenser.



8. Remove the front nozzle medallion, by removing the four (4) outer screws.



9. Unclip any of the existing syrup lines and remove from valve.



10. Repeat Step 8 for remaining syrup lines and two (2) water lines.
11. Remove the four (4) screws on the nozzle plate to move the existing nozzle assembly from the unit.

Installing New Compact Nozzle Assembly

1. Attach the two (2) water lines on the center line of nozzle assembly to the two (2) water valves and engage retainer clips to secure in place.
2. Attach brand syrup lines on the outer ring of nozzle assembly to any open brand syrup valve.
3. Attach bonus flavor lines on the inner ring of nozzle assembly to any open bonus flavor valve.



*Outer Ring
(Brand Syrups)*

*Inner Ring
(Bonus Flavors)*

*Center Line
(Water/Soda)*

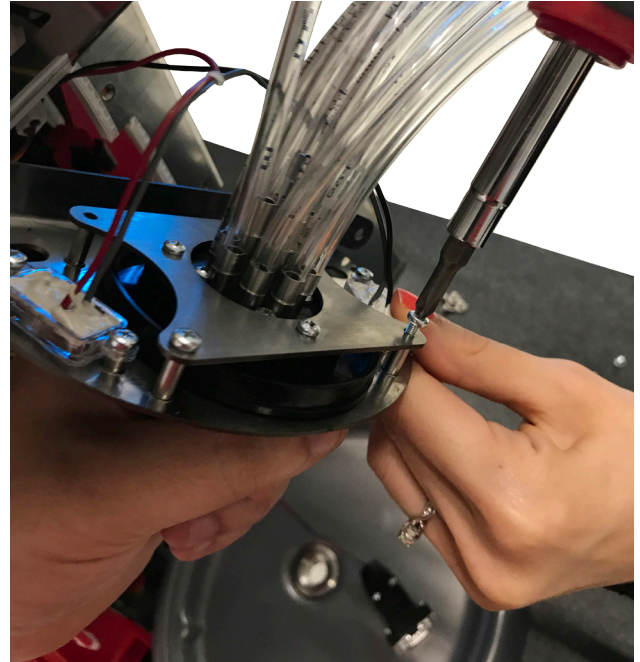
NOTE

If any line is unused in the existing unit configuration, remove the unused line and cap using one of the nozzle caps supplied with kit.

4. Install new nozzle assembly to nozzle plate using the four (4) screws removed in Step 11 of the previous section.

NOTE

Make sure LED nozzle light wires are in front of the tubing after installing to front plate.



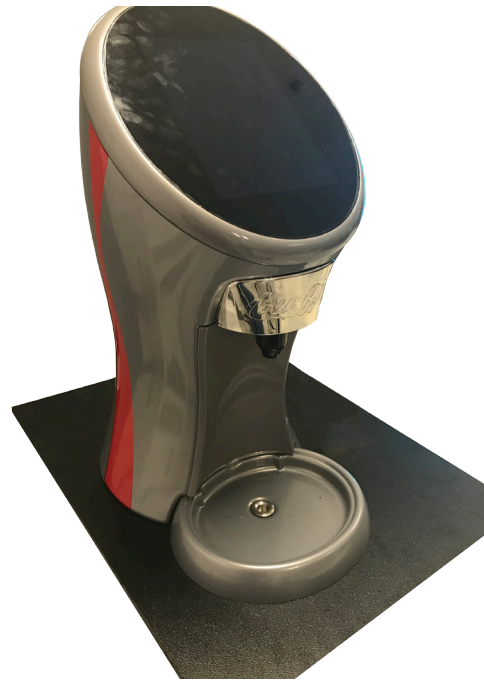
5. Slide the front nozzle medallion onto the nozzle plate and attach to unit using the four (4) screws removed in Step 8 of the previous section.



6. Remove the new compact nozzle by twisting clockwise and pulling down.



7. Re-attach front panel to the front of the unit.
8. Re-attach new compact nozzle.
9. Close the head of the tower.
10. Re-attach splash plate.
11. Plug in the unit and flush lines to fill new tubing.



Lancer Corp., 6655 Lancer Blvd., San Antonio, Texas 78219 - 800-729-1500 - Technical Support/Warranty: 800-729-1550

custserv@lancercorp.com - lancercorp.com - Manual PN: 28-0997 - August 2017

"Lancer" is the registered trademark of Lancer © 2017 by Lancer, all rights reserved.