

WARNING: UNPLUG POWER TO THE DISPENSER BEFORE INSTALLATION OF THE HEATING ELEMENT, INSTALLATION IS TO BE PERFORMED ONLY BY QUALIFIED TECHNICIAN

PARTS LIST:

Heating Element
Adaptors
Clean Wipes

TOOLS REQUIRED:

5/16", 7/16" Socket Wrench
Philips Screwdriver

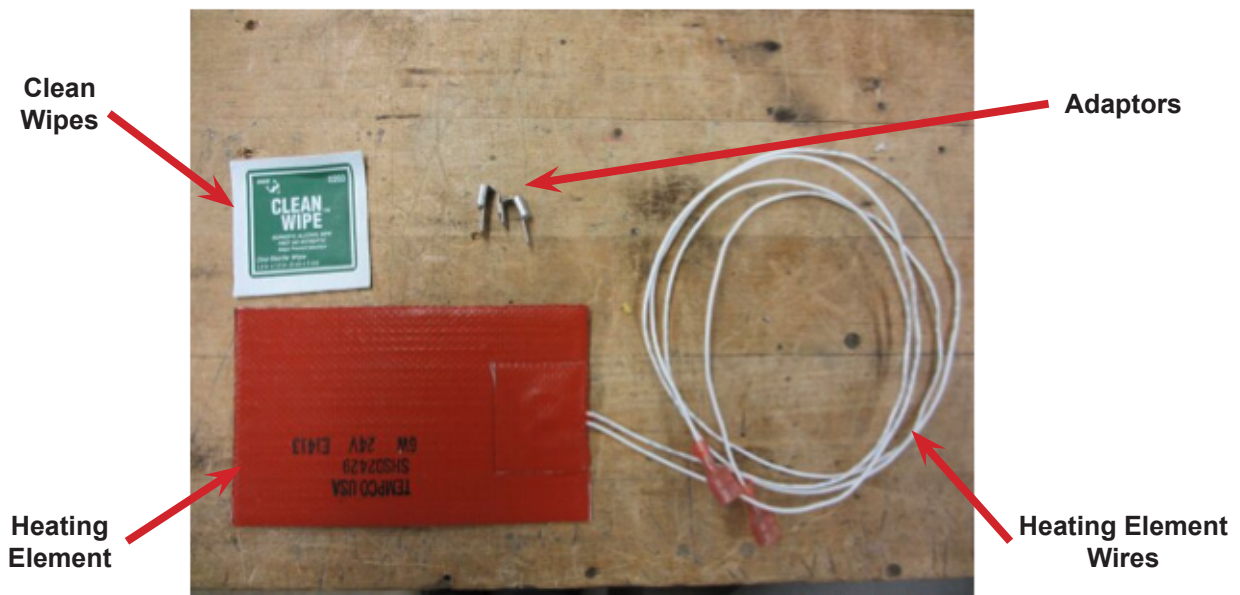


Figure 1: Kit Parts

1. INSTALLATION

- A. Remove Drip Tray, Splash Plate and Merchandiser.
- B. Remove Control Box Cover and Agitator Motor Cover.

Lancer Corp., 6655 Lancer Blvd., San Antonio, Texas 78219

800-729-1500 - Technical Support/Warranty: 800-729-1550

custserv@lancercorp.com - lancercorp.com

Manual PN: 28-2832 - July 2014

"Lancer" is the registered trademark of Lancer © 2014 by Lancer, all rights reserved.

CONTINUED ON NEXT PAGE.....

1. INSTALLATION (CONTINUED)

- C. Remove motor capacitor by rotating the capacitor to the right to expose the screw.



**Motor
Capacitor**

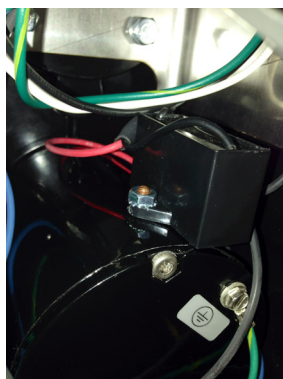


Figure 2: Motor Capacitor

- D. Thread the white heater wires behind the valve plate on the left side of the ice chute (Figure 3,4).
- E. Slide the wires to the right of the ice chute and through the hole in the enclosure of the control box (Figure 5,6).



Figure 3



Figure 4

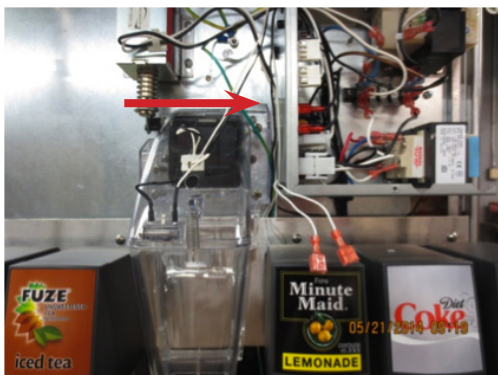


Figure 5

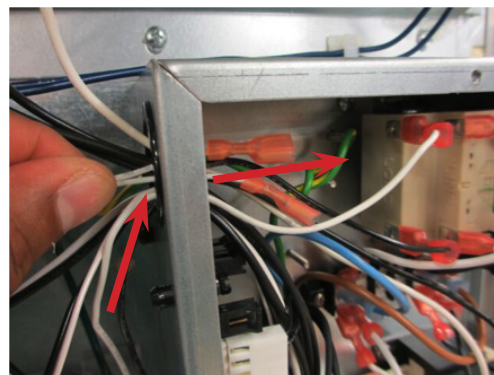


Figure 6

1. INSTALLATION (CONTINUED)

- F. Disconnect existing wires as shown in Figure 8 and 9.
- G. Install adaptors to the connections recently exposed by removal of existing wires.

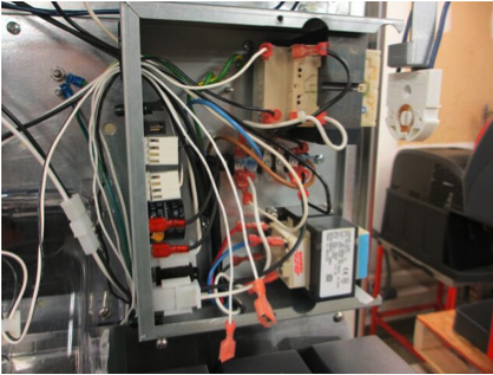


Figure 7: Open Control Box

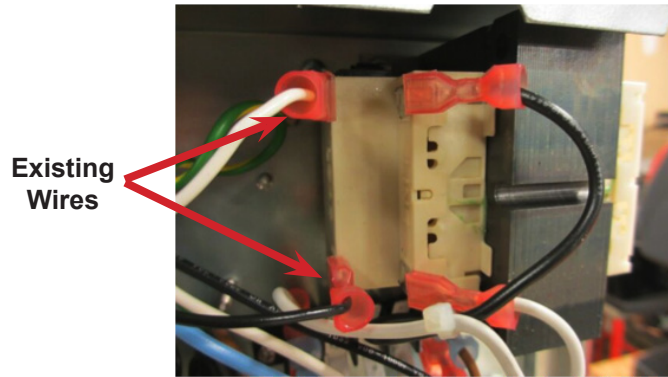


Figure 8: Existing Configuration

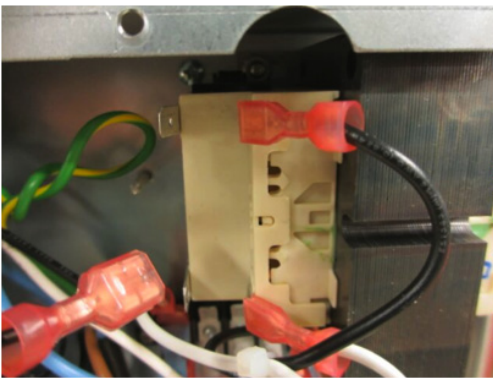


Figure 9: Remove Existing

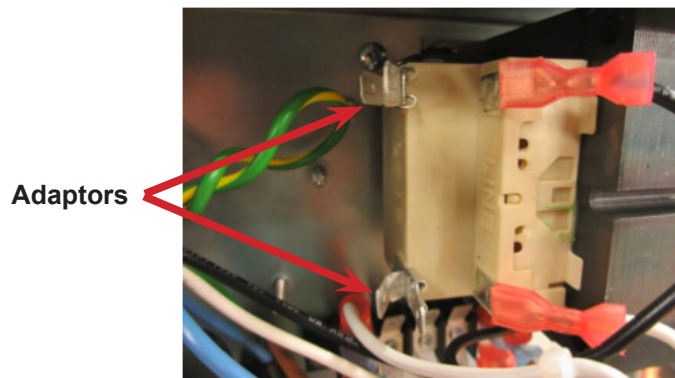


Figure 10: Install Adaptors

- H. Connect heater wires to the adaptors (Figure 11).
- I. Connect original wires back to the second connection on the adaptors (Figure 12).

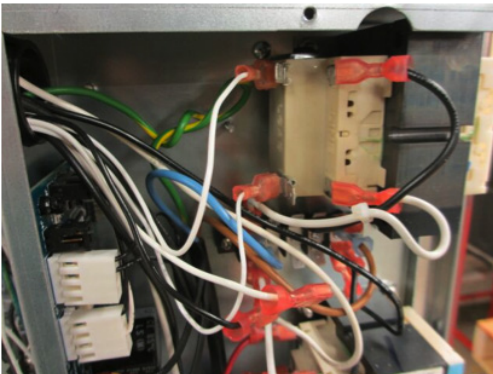


Figure 11

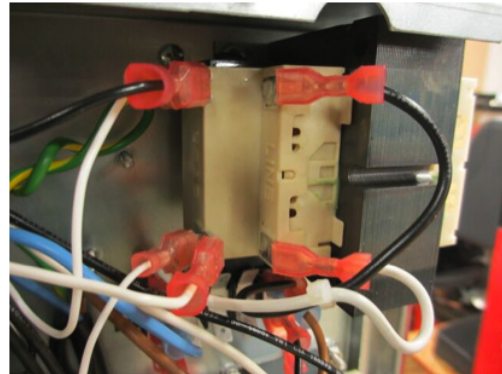


Figure 12

1. INSTALLATION (CONTINUED)

- J. Clean top surface of Agitator Motor using Clean Wipe (Figure 13).
- K. Remove adhesive backing (Figure 14).
- L. Install heater as far back on the agitator motor as possible (Figure 15).
- M. Install capacitor (Figure 16).



Figure 13

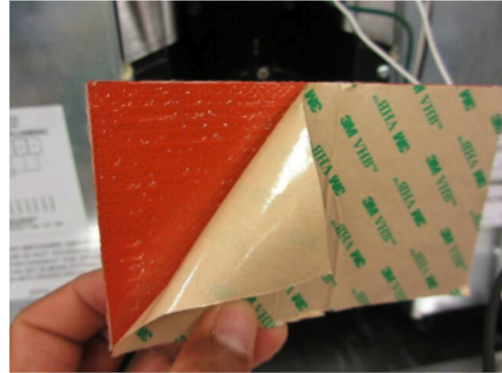


Figure 14



Figure 15

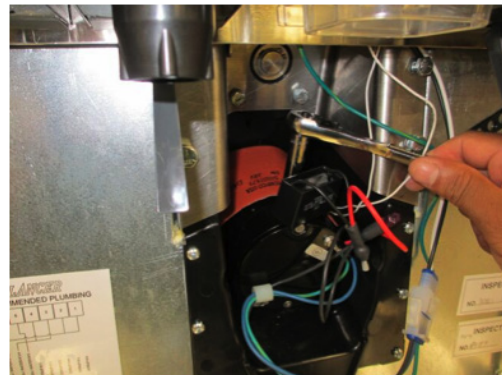


Figure 16

- N. Secure all wires back in place.
- O. Install Agitator Motor Cover, CAUTION not to pinch wires.
- P. Install Control Box Cover, Merchandiser, Splash Plate, and Drip Tray.

