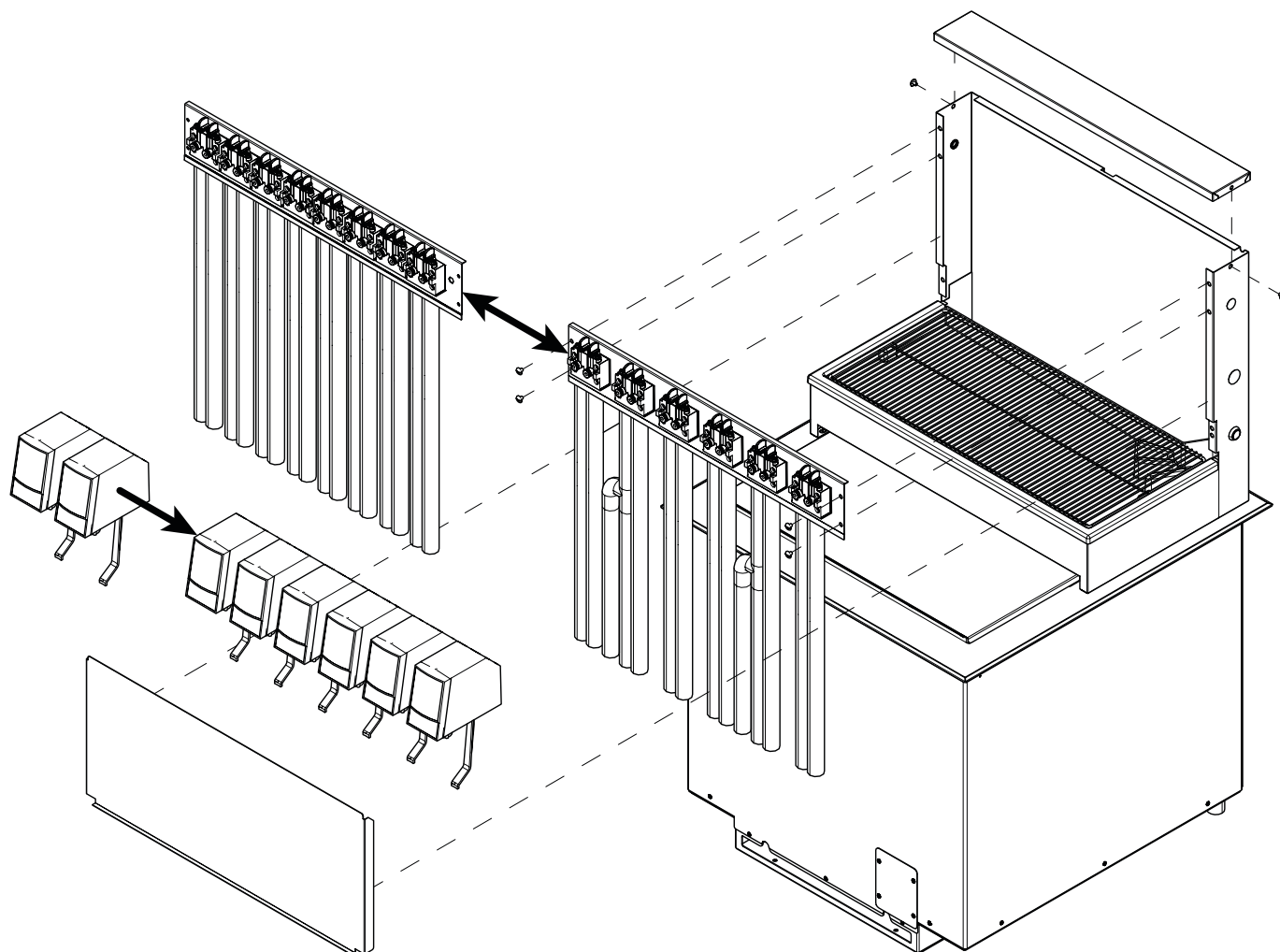


The following illustrates how to convert an existing 6-Valve 2300 Ice Cooled Drop-In unit to an 8-Valve 2300 Ice Cooled Drop-In unit.

Kit Contents - 82-6283

<u>Item</u>	<u>Part Number</u>	<u>Description</u>	<u>Qty</u>
-------------	--------------------	--------------------	------------



Conversion Instructions

1. If unit is already in operation, first de-pressurize both the syrup and water systems.

⚠ WARNING

Disconnect power from unit prior to service.

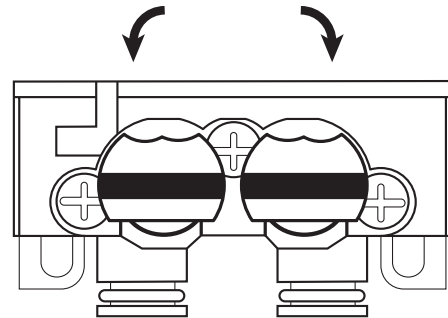
2. Unplug the unit power cord from wall outlet.
3. Remove the unit cup rest, drip tray, and splash plate to gain access to valve lines.



4. Remove the top panel by removing the screw on the left and right side of the tower.



5. Remove the ID panels and valve covers for all six (6) valves.
6. Turn the back block stems for syrup and water to the closed positions. Repeat for each valve back block.

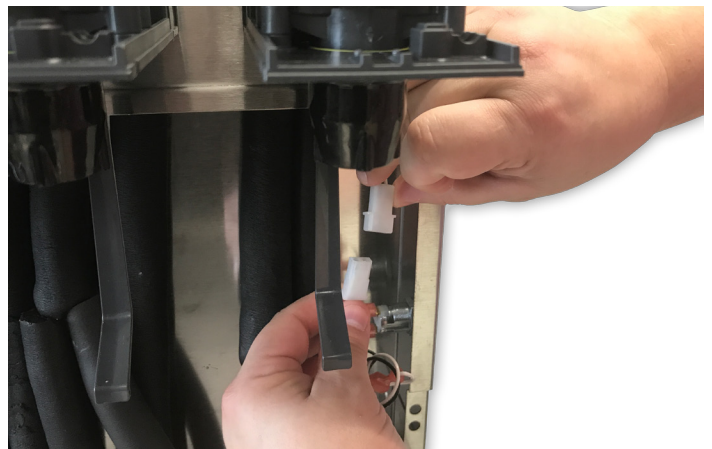


Closed Position

7. Unplug each valve harness on faucet plate.



8. Unplug the faucet plate power harness on the right side of the dispenser.



9. Lift the retainer on the valve and pull backwards to remove the valve from the back block. Repeat for each valve.



10. Using tubing cutters and some oetiker pliers detach all of the syrup/water lines and oetiker clamps from the inlets at the base of the tower. Remove the vinyl caps from the remaining two inlets.

11. Remove the screws on either side of the tower to disengage the 6-Valve faucet plate assembly and remove from tower.

12. Install the new 8-Valve faucet plate assembly, provided with kit, to the unit using the screws removed in previous step.

13. Using the insulation provided with kit and some tubing cutters, cut a length of insulation from the inlet on the bottom of the tower to the back of the faucet plate.

NOTE

Make sure tubing insulation covers entire length of tubing as well as the syrup/water inlet.

14. Slide the length of insulation over one of the lines on the new 8-Valve faucet plate assembly.

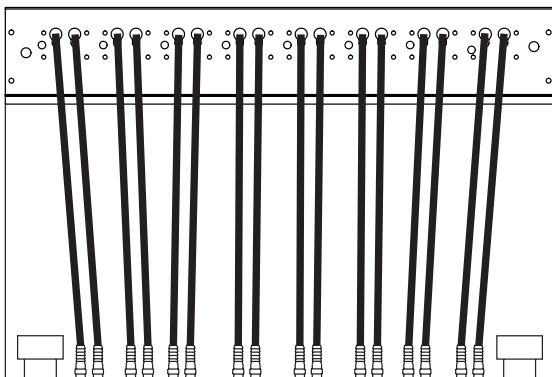
15. Repeat Steps 13-14 to insulate each line in the tower.

NOTE

Make sure valve power harnesses are set over the top of the insulated syrup and water lines and the insulation reaches all the way to the end of the line, tight to the back of the faucet plate.



16. Align each syrup and water line with the appropriate openings in the faucet plate. See plumbing diagram below for reference.



17. Using oetiker pliers and clamps, attach each of the new syrup/water lines to the appropriate inlets. See plumbing diagram for reference.

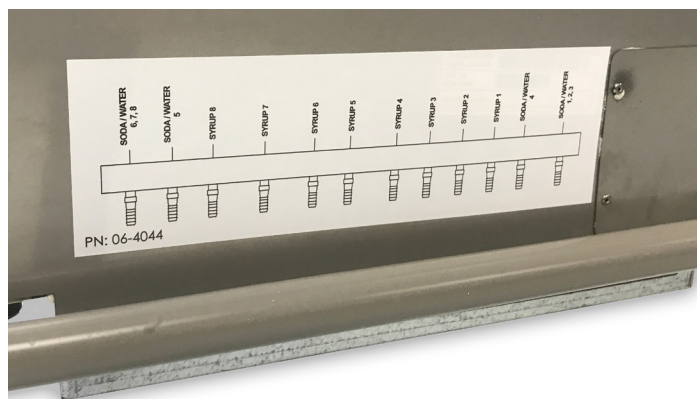


18. Plug-in the new 8-valve faucet plate to unit power harness.
19. Re-install each valve to the appropriate back block. Install two new valves to newly installed back blocks.

20. Plug in each valve to the corresponding valve harness on the valve plate.
21. Open the valve stems on each of the back blocks.
22. Re-install top plate, splash plate, drip tray, and cup rest.
23. Remove the plugs from syrup inlets 2 and 7 at the bottom of the unit.



24. Install the new plumbing diagram, included in kit, over the existing plumbing diagram.



25. Connect the two new syrup lines to syrup inlets 2 and 7 and re-pressurize the syrup and water systems.