

## In This Issue:

Changes to Standard Performance ICDIs.....	2-5
Ending the Lancer Mini Pump Assembly.....	6-7

## Technical Bulletin Distribution:

The Lancer Engineering Department publishes a Technical Bulletin every other month. To subscribe or unsubscribe from the Tech Bulletin, go to [lancercorp.com](http://lancercorp.com). Click on the Contact link and scroll down to Technical Publications. Lancer Installation and Service Manuals, Instruction Sheets, previous Technical Bulletins, and a complete index of Technical Bulletin articles are also available at [lancercorp.com](http://lancercorp.com). For general questions about the Tech Bulletin, email [custserv@lancercorp.com](mailto:custserv@lancercorp.com) or call (210) 310-7230.

## Contact Information

**Lancer Sales:** (800) 729-1500

**Lancer Customer Service:** (800) 729-1500

**Lancer Warranty:** (800) 729-1550

**Lancer USA:** (210) 310-7000

**Canada:** (210) 310-7187

**Latin America:** (210) 310-7000

**International Sales:** (210) 310-7063

**Europe:** 32-2-755-2390

**Australia/New Zealand:** 61-8-8268-1388

**Email:** [custserv@lancercorp.com](mailto:custserv@lancercorp.com)

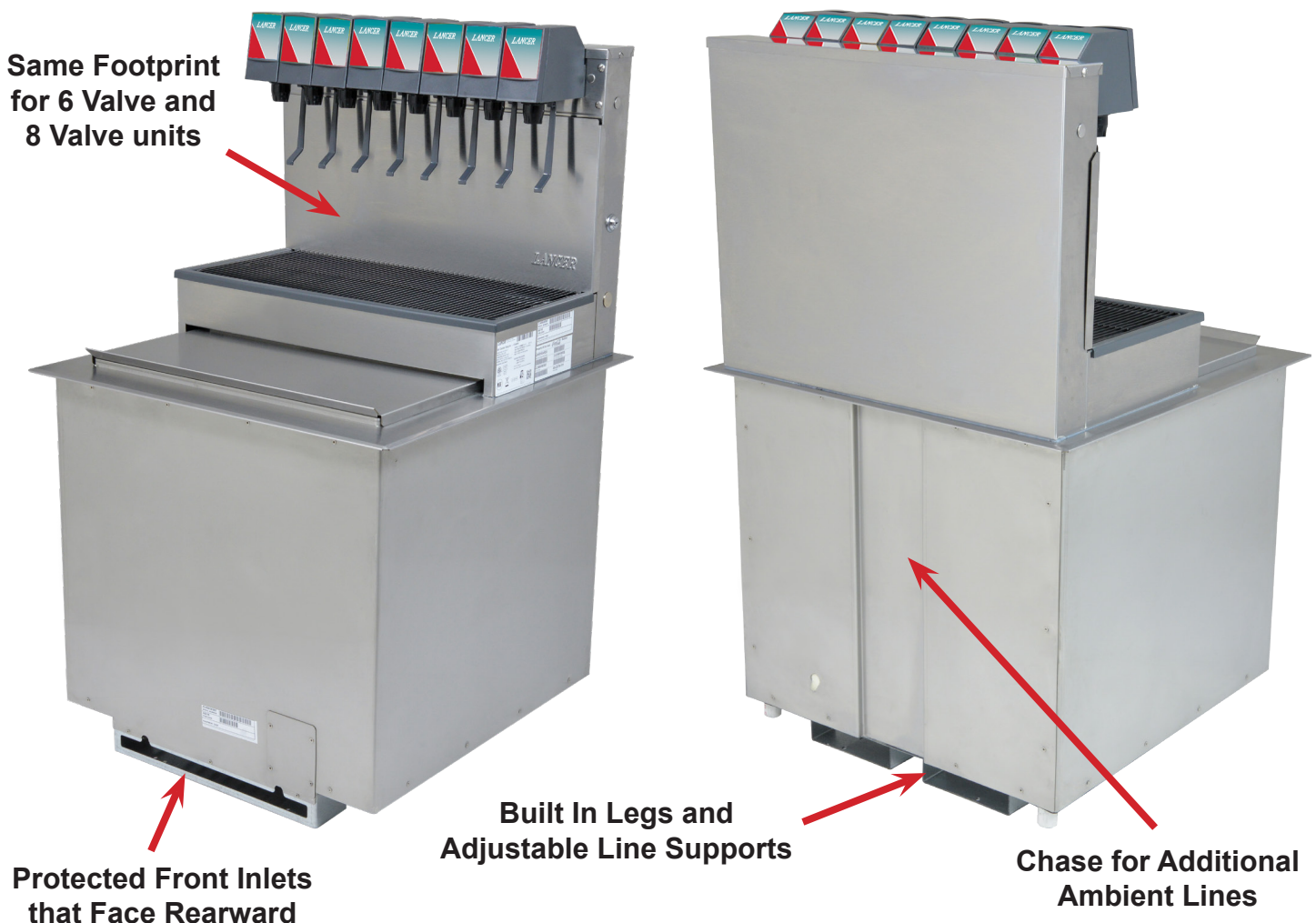
**Lancer Website:** [www.lancercorp.com](http://www.lancercorp.com)



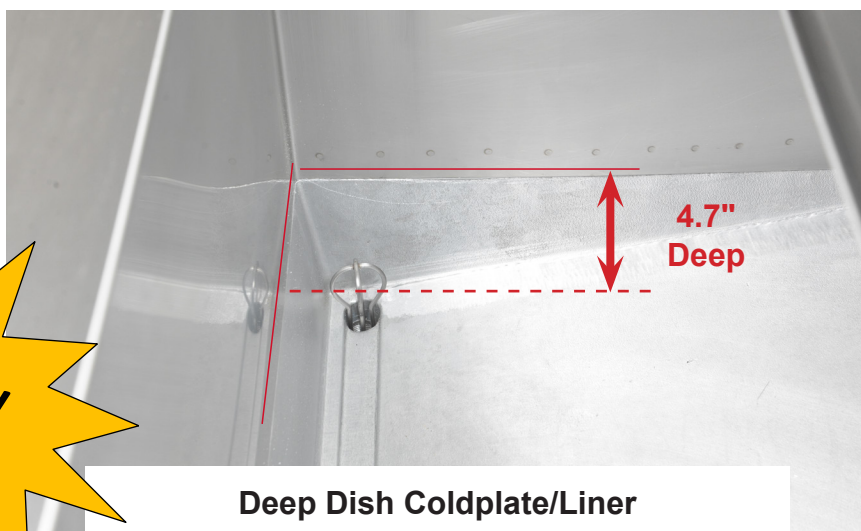
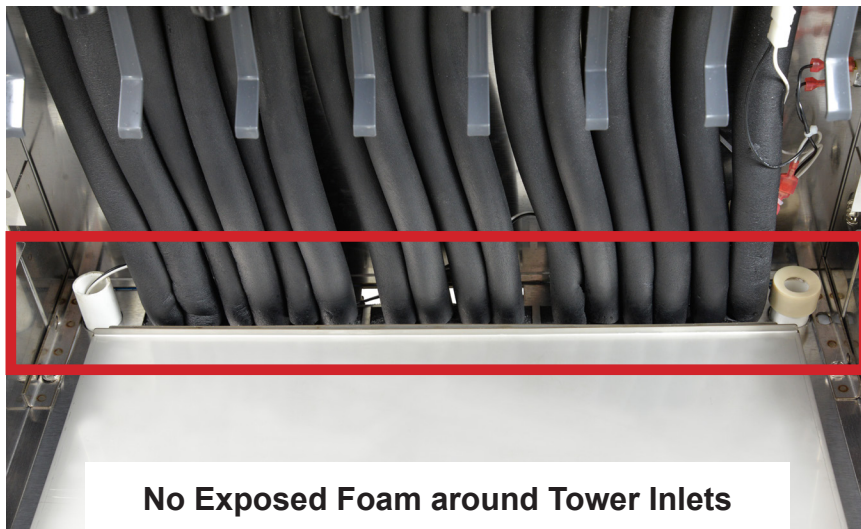
Lancer has been hard at work with an optimization of our 2323 Standard Performance ICDI Product Line. The Optimized design adds some exciting features that will provide the same great performance as well as an improved serviceability of the Standard Performance family! The intent was to standardize the manufacturing process, improve the service and installation, and improve the features and performance for the 2323 ICDI all while not changing any of the existing unit configurations.

- New Sales on ALL Standard Performance configurations and SKUs will seamlessly transition to this new upgraded Design starting on March 15, 2019.
- Optimized Designs will follow for the High Performance family of 2323 Drop-Ins.
- Optimized versions of all 2323 Drop-In families will launch by the end of Q2 2019.
- All Marquee, Merchandiser, Valve, and Power Supply options that are currently available on the Standard Performance 2323 will continue to be supported by the Optimized design (see exploded view or call customer service for specific part numbers).

## Improved Serviceability:



## Improved Clean Ability and Life Cost



## Improved Regulatory and Compliance:



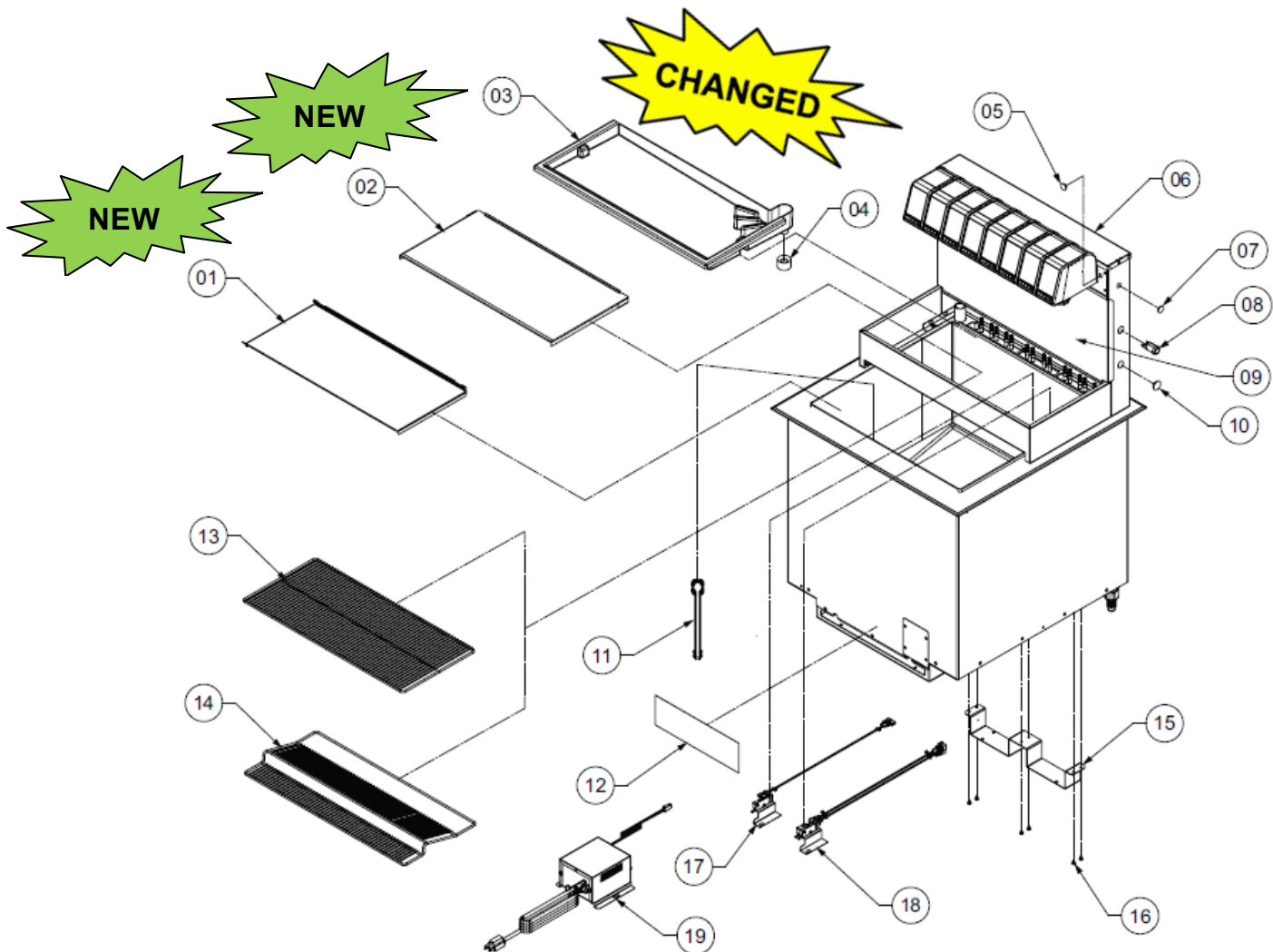
Legacy Design: Inner Rim could pull away from side, leaving exposed foam.

Optimized Design: Eliminates the issue with a change to a "Hemmed" design



## New or Changing Spare Parts

1. NEW Sliding Bin Cover (CCP# 27635)
  - Lancer PN: 30-7140/01 to 30-16124
  - Not compatible with Legacy models
2. NEW Sanitary Plate (CCP# 130098)
  - Lancer PN: 51-6115/01 to 30-16156
  - Not compatible with Legacy models
3. CHANGED Drip Tray (CCP# 117107)
  - CCP# 28057 CHANGING to CCP# 117107
  - Lancer PN: 05-1074/03 to 05-2586
  - Not compatible with Legacy models



Item	Part No.	Description
01	30-16124	Sliding Bin Cover, 2323 ICDI
02	30-16156	Sanitary Plate, 2323 ICDI
03	05-2586	Drip Tray, 2323, CIC
04	05-2467	Drip Tray Drain Coupler, IC
05	07-0555	Hole Plug, 13/32" Dia, SS
06	30-12703	Cap, w/out Holes, Tower, 2323K
07	07-0556	Hole Plug, 1/2" Dia, SS
08	12-0097	Key Lock Switch, Maintain, Spade
09	30-5425-01	Splash Plate, 23" w/ Lancer Logo
10	07-0405	Hole Plug, 3/4" Dia, SS
11	23-0862	Wire Drain Assembly, Ice Cooled

Item	Part No.	Description
12	06-4044	Plumbing Diagram Label, 2323 ICDI, 8 Valve, SP
13	23-0797	Cup Rest, Wide Sabre Tower
14	23-1131	Cup Rest, Tilted Surefill, 23" ICDI
15	30-16082	Rear Tube Support Bracket, 2323 ICDI
16	04-0504	Screw, 8-18 x 0.375, PHD, w/out Washer, PH, AB, SH
17	82-6297	Sliding Bin Lid Kit
18	82-6216	Double Sliding Bin Lid, Cut Off
19	82-3029	Power Supply Assembly, 120-24 V, 75 W, EX SW



## Product Support Plans: Conversion Kit - 6 Valve to 8 Valve

- 6 Valve and 8 Valve dispensers use the same footprint.
- By replacing the existing faucet plate and re-routing the lines on the tower, an existing 6 Valve Drop-In can be converted to an 8 Valve Drop-In.
- A simple field update is all that is necessary to pour 2 additional brands from the same dispenser.

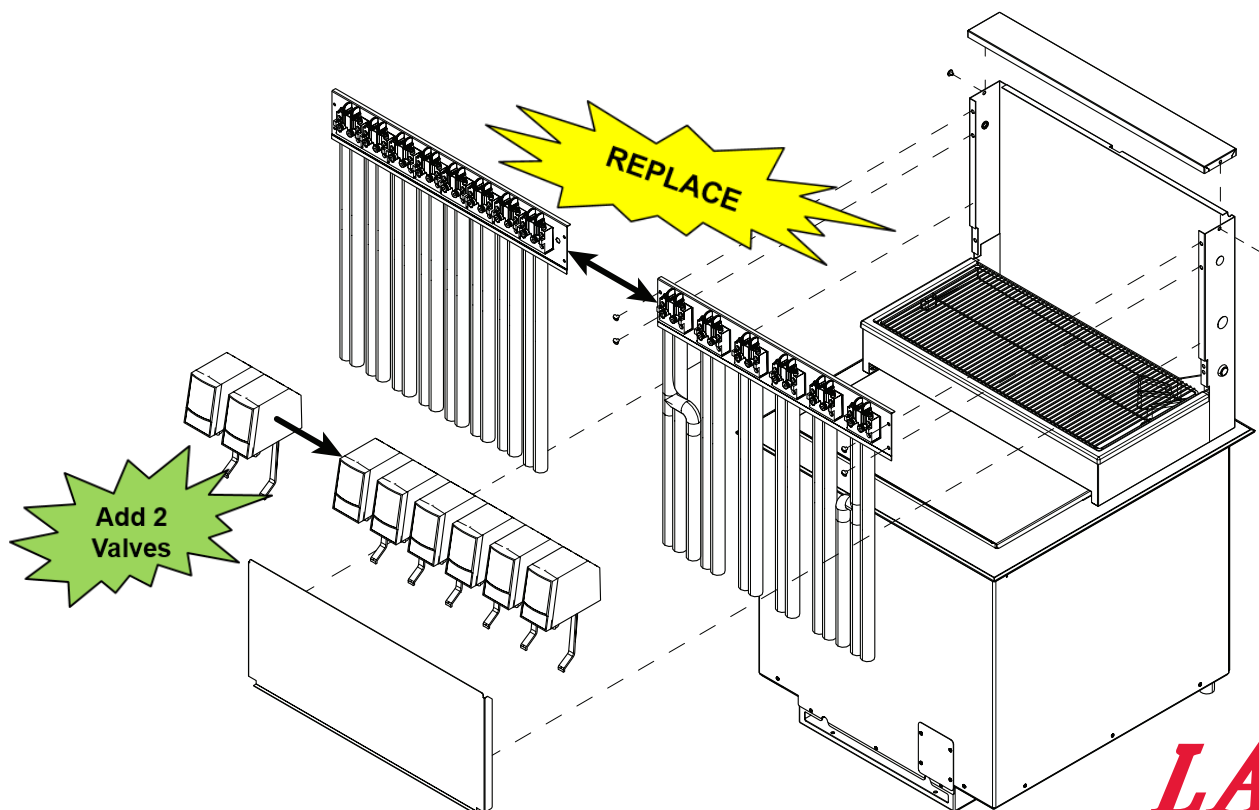


**Standard 6 Valve**

**Conversion Kit  
PN: 82-6283**



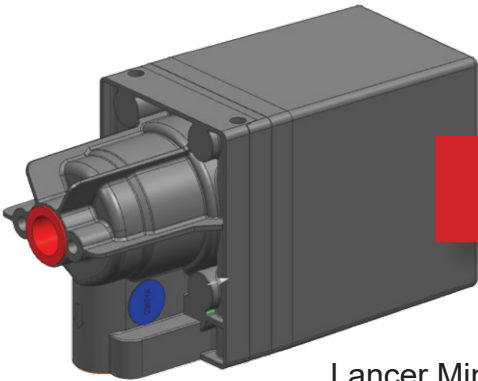
**Standard 8 Valve**



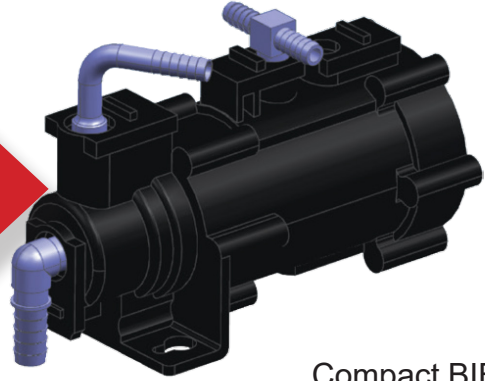
**LANCER®**

As of March 2019 all Counter Electric Dispensers (CED) with Lancer Mini Pumps will be built with the Compact BIB Pump Assembly. This change was made to provide a more reliable and industry standard product. Instead of purchasing single replacement mini pumps an operator now has two options:

1. **Replace** entire Lancer Mini Pump Assembly with the new Compact BIB Pump Assembly.
2. **Purchase a retrofit dual pump bracket kit, and two Compact BIB Pumps for a field replacement.** Retrofits must be made two pumps at a time. Existing Lancer Internal Mini Pumps will work together on the same unit.



Lancer Mini Pump  
82-0251-SP



Compact BIB Pump  
86-0195-SP

## Features & Benefits of the Compact BIB Pump

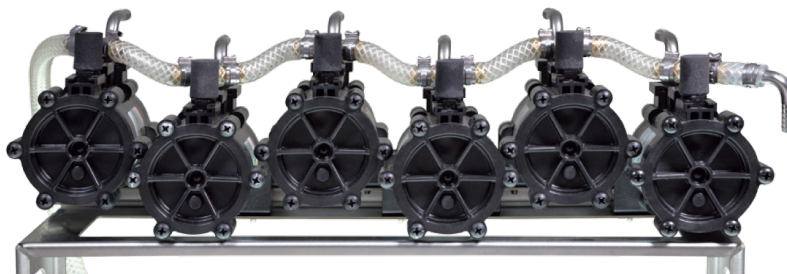
Compact BIB Pumps, the industry standard provides an efficient fluid handling solution, from standard syrup viscosities to non-pulp juice concentrates with ease.

- Compact BIB Pumps have mufflers for a quieter fountain experience
- Technologically advanced construction with glass filled polypropylene body, for chemical resistance to syrups and concentrates
- High quality, stainless steel fittings
- Space - saving footprint that eliminates the need for a backroom
- 3 quick connect fittings, with CO<sub>2</sub> check valves, allowing for quick pump replacement
- EC 1935 compliant



Compact BIB Pump  
with Fittings  
86-0195-SP

Bulk Package  
86-0195-SP36

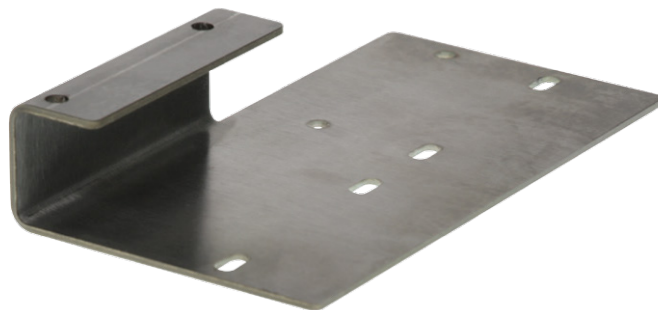


## New Pump Configurations

1. All new CED units are built with new Compact BIB Pump Assembly
2. Retrofit existing unit with a pair of Compact BIB Pumps and 2-pump Upgrade Bracket
3. Retrofit existing unit with an entire Compact BIB Pump Assembly

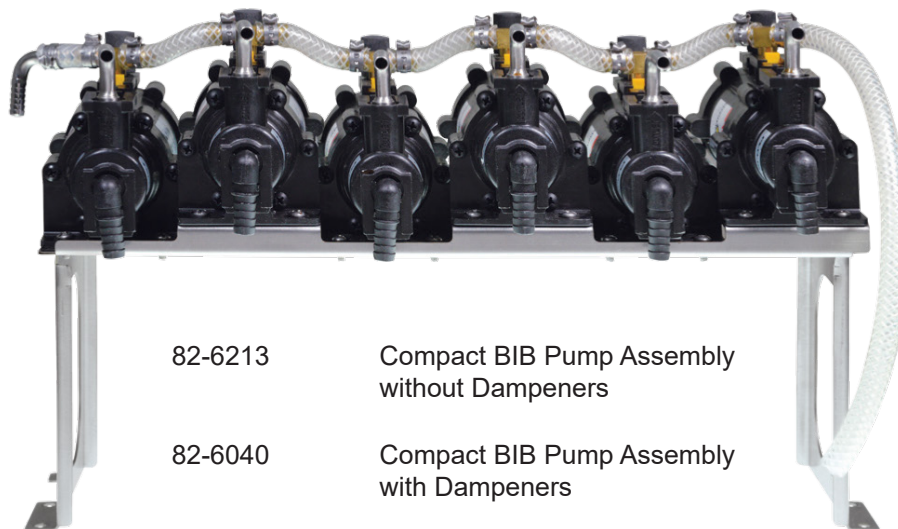


Compact BIB Pumps  
with Fittings  
86-0195



Compact Pump 2-Pump  
Upgrade Bracket  
82-6338

***\*\*Pumps and Bracket sold separately\*\****



82-6213

Compact BIB Pump Assembly  
without Dampeners

82-6040

Compact BIB Pump Assembly  
with Dampeners

For more information on replacing Lancer Mini Pumps with new Compact BIB Pumps or information on the Compact Pump itself, visit [lancercorp.com](http://lancercorp.com) or call your Lancer Customer Service representative at (800) 729-1500 or email [custserv@lancercorp.com](mailto:custserv@lancercorp.com).