

IN THIS ISSUE:

IBD Agitator Motor Heating Element.....	2
---	---

TECHNICAL BULLETIN DISTRIBUTION

The Lancer Engineering Department publishes the Technical Bulletin every other month.

To subscribe or unsubscribe from the Tech Bulletin, go to lancercorp.com. Click on the Contact link and scroll down to Technical Publications.

Lancer Installation and Service Manuals, Instruction Sheets, previous Technical Bulletins, and a complete index of Technical Bulletin articles are also available at lancercorp.com.

For general questions about the Tech Bulletin, email techpubs@lancercorp.com or call (210) 310-7230.

CONTACT INFO

Lancer Sales: (800) 729-1500

Lancer Customer Service: (800) 729-1500

Lancer Warranty: (800) 729-1550

Lancer USA: (210) 310-7000

Canada: (210) 310-7187

Latin America: (210) 310-7000

International Sales: (210) 310-7063

Europe: 32-2-755-2390

Australia/New Zealand: 61-8-8268-1388

Email: custserv@lancercorp.com

Lancer Website: www.lancercorp.com

**TOUCH
POINT**

IBD 4500 Series



IBD Agitator Motor Heating Element

Technical Bulletin Reference No. 2109-001

In certain regions, the surrounding environment may be a contributing factor to excessive condensation forming on the agitator motor in Lancer's Ice Beverage Dispenser's. If this occurs, the condensation could possibly play a role in motor failure. Here at Lancer, a heating element secured to the motor has been tested and proven to help control condensation forming on the motor and help prevent motor failure due to condensation. A kit (part number: 82-4816) has been released that includes the components necessary for field installation of the heating element on the Ice Beverage Dispenser's.

The following is a complete set of instructions on how to install the new heating element:

WARNING: UNPLUG POWER TO THE DISPENSER BEFORE INSTALLATION OF THE HEATING ELEMENT, INSTALLATION IS TO BE PERFORMED ONLY BY QUALIFIED TECHNICIAN

PARTS LIST:

Heating Element
Adaptors
Clean Wipes

TOOLS REQUIRED:

5/16", 7/16" Socket Wrench
Philips Screwdriver

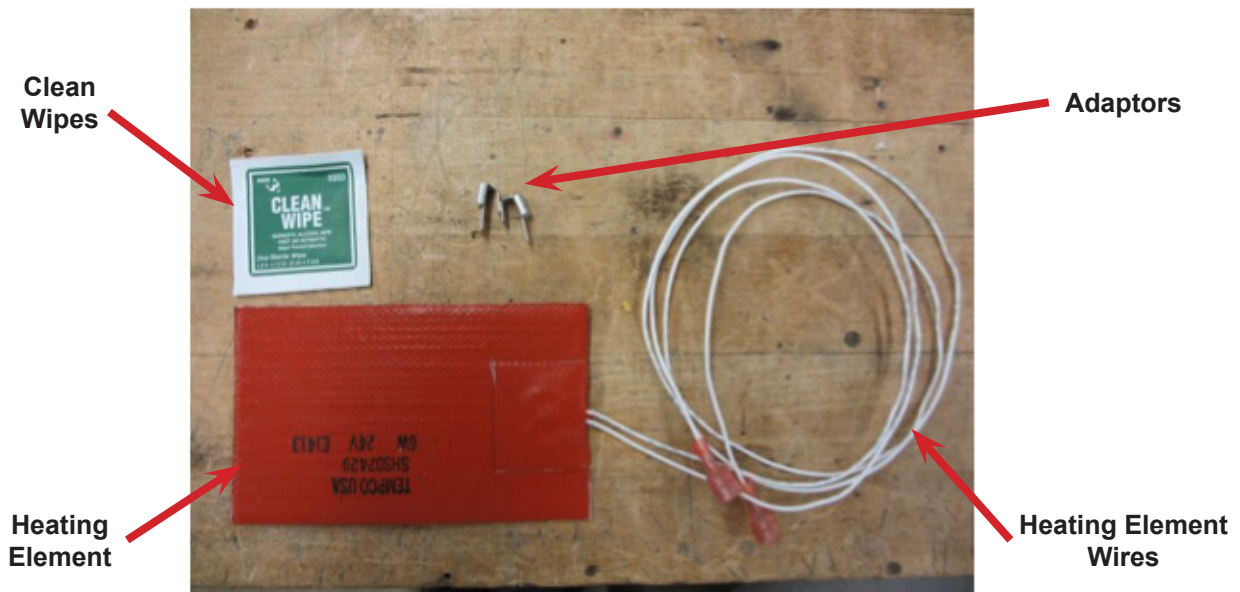


Figure 1: Kit Parts

1. INSTALLATION

- Remove drip tray, splash plate and merchandiser.
- Remove control box cover and agitator motor cover.
- Remove motor capacitor by rotating the capacitor to the right to expose the screw.



Motor
Capacitor



Figure 2: Motor Capacitor

1. INSTALLATION (CONTINUED)

- D. Thread the white heater wires behind the valve plate on the left side of the ice chute (Figure 3,4).
- E. Slide the wires to the right of the ice chute and through the hole in the enclosure of the control box (Figure 5,6).

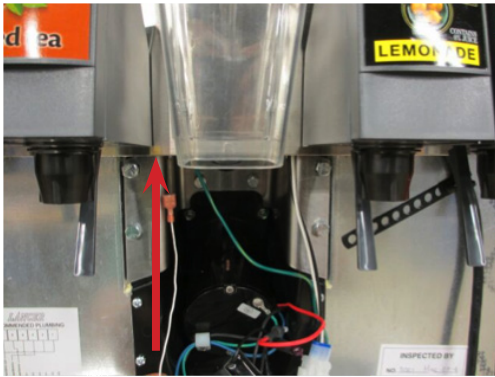


Figure 3



Figure 4

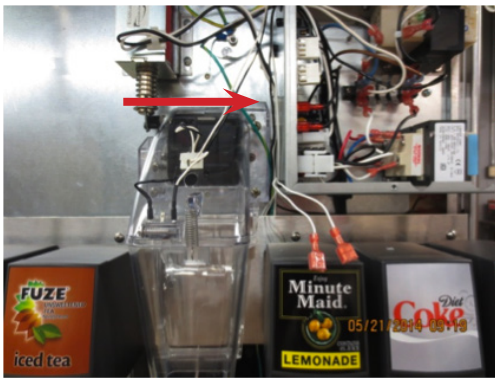


Figure 5

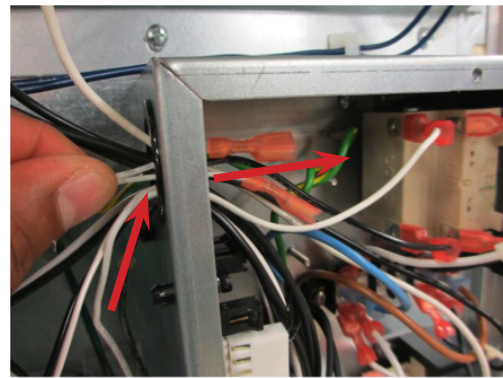


Figure 6

1. INSTALLATION (CONTINUED)

- F. Disconnect existing wires as shown in Figure 8 and 9.
- G. Install adaptors to the connections recently exposed by removal of existing wires.

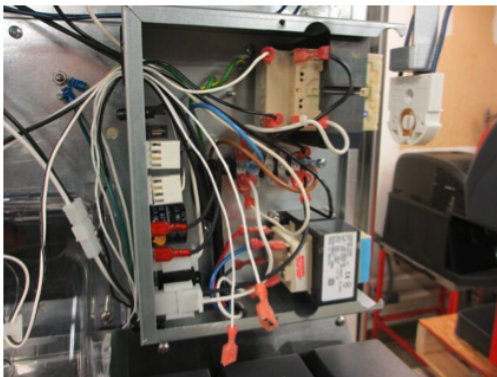


Figure 7: Open Control Box

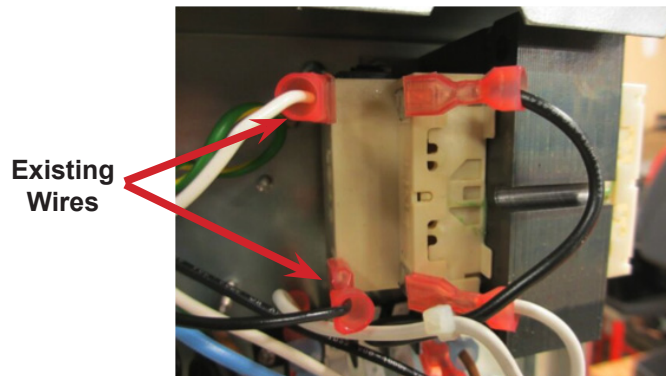


Figure 8: Existing Configuration

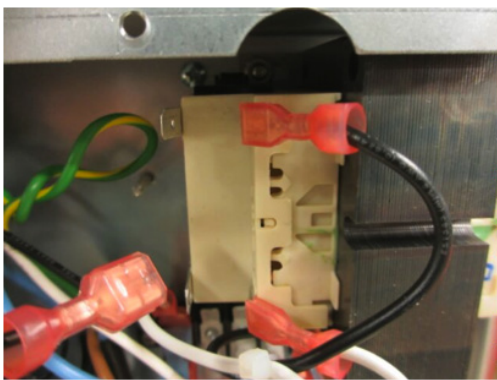


Figure 9: Remove Existing

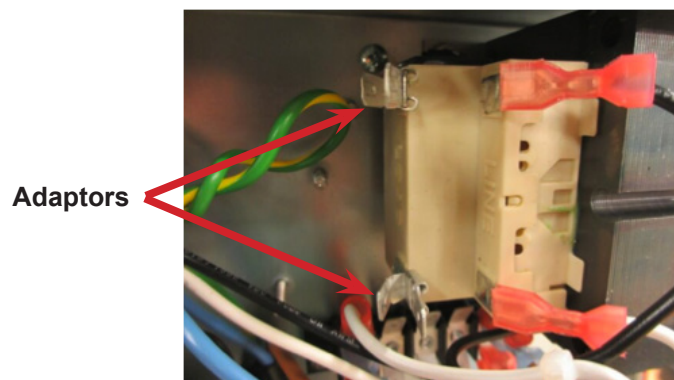


Figure 10: Install Adaptors

- H. Connect heater wires to the adaptors (Figure 11).
- I. Connect original wires back to the second connection on the adaptors (Figure 12).

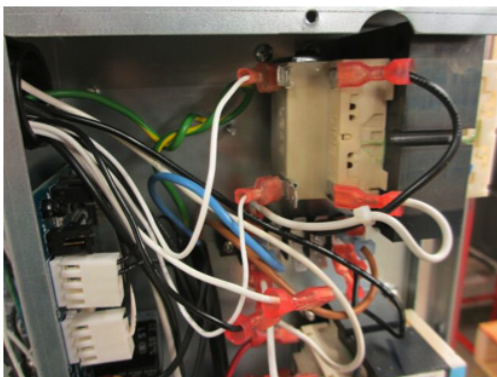


Figure 11

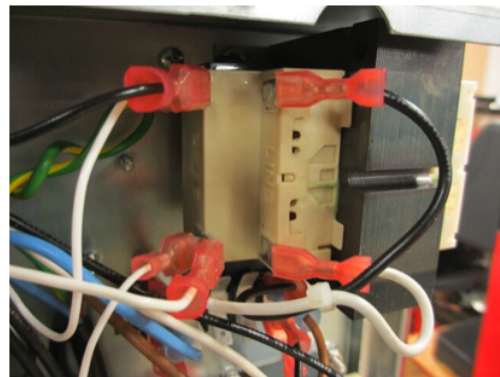


Figure 12

1. INSTALLATION (CONTINUED)

- J. Clean top surface of agitator motor using clean wipe (Figure 13).
- K. Remove adhesive backing (Figure 14).
- L. Install heater as far back on the agitator motor as possible (Figure 15).
- M. Install capacitor (Figure 16).



Figure 13

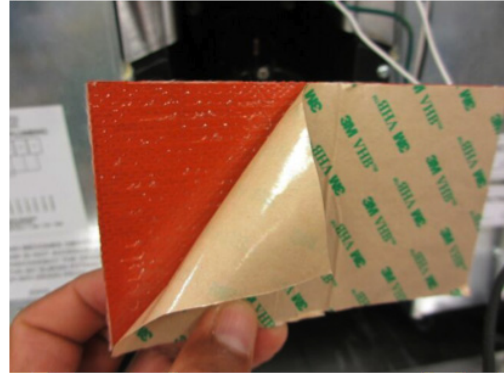


Figure 14

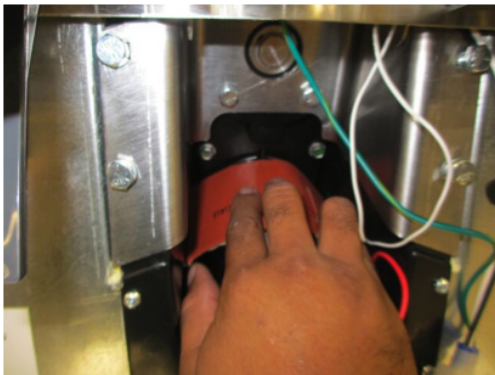


Figure 15

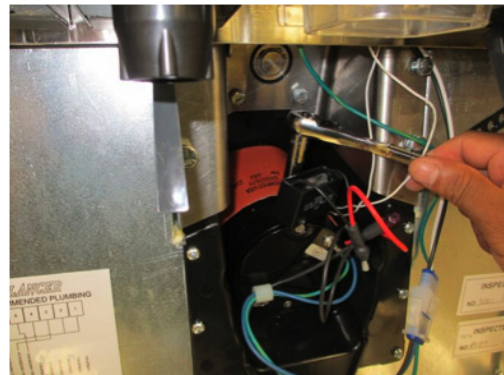


Figure 16

- N. Secure all wires back in place.
- O. Install agitator motor cover, **CAUTION** not to pinch wires.
- P. Install control box cover, merchandiser, splash plate, and drip tray.



NOTE: For more ways to prevent moisture, please ask about Lancer Kit, “Agitator Motor Wiring Waterproofing Process”, PN: 82-4234. For more information on this kit and other available kits please visit our website, lancercorp.com, or contact Lancer Customer Support.